

# \$299,900 - 55 Keen Crescent, Red Deer

MLS® #A2209009

**\$299,900**

3 Bedroom, 2.00 Bathroom, 647 sqft

Residential on 0.07 Acres

Kingsgate, Red Deer, Alberta

Beautiful HALF DUPLEX BI-LEVEL! The main level flows nicely with the living room, kitchen and dining spaces and a 2pc powder room, with 3 bedrooms and a full bath below. And, it's painted in neutral colours with lots of upgrades and comes with 5 appliances! Close to transit, schools and shopping, this could be a great young family home or investment property. Fully fenced and nice sized yard!

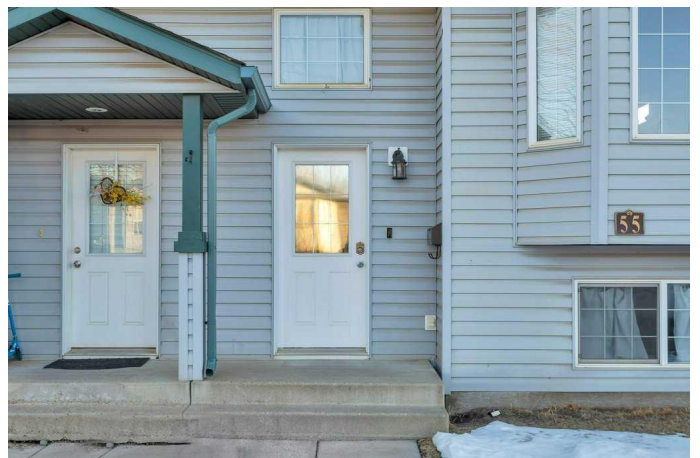
Built in 2004

## Essential Information

MLS® #	A2209009
Price	\$299,900
Bedrooms	3
Bathrooms	2.00
Full Baths	1
Half Baths	1
Square Footage	647
Acres	0.07
Year Built	2004
Type	Residential
Sub-Type	Semi Detached
Style	Side by Side, Bi-Level
Status	Active

## Community Information

Address	55 Keen Crescent
Subdivision	Kingsgate



City	Red Deer
County	Red Deer
Province	Alberta
Postal Code	T4P 4B8

### Amenities

Parking	Off Street
---------	------------

### Interior

Interior Features	Central Vacuum, Open Floorplan, Pantry, Vinyl Windows
Appliances	Dishwasher, Range Hood, Refrigerator, Stove(s), Washer/Dryer
Heating	Forced Air, Natural Gas
Cooling	None
Has Basement	Yes
Basement	Finished, Full

### Exterior

Exterior Features	Storage
Lot Description	Back Lane, Landscaped, Rectangular Lot
Roof	Shingle
Construction	Concrete, Vinyl Siding, Wood Frame
Foundation	Poured Concrete

### Additional Information

Date Listed	April 7th, 2025
Days on Market	13
Zoning	R1A

### Listing Details

Listing Office	RE/MAX real estate central alberta
----------------	------------------------------------

Data is supplied by Pillar 9â„¢ MLSÂ® System. Pillar 9â„¢ is the owner of the copyright in its MLSÂ® System. Data is deemed reliable but is not guaranteed accurate by Pillar 9â„¢. The trademarks MLSÂ®, Multiple Listing ServiceÂ® and the associated logos are owned by The Canadian Real Estate Association (CREA) and identify the quality of services provided by real estate professionals who are members of CREA. Used under license.