

\$515,000 - 224 Highland Circle, Strathmore

MLS® #A2208819

\$515,000

4 Bedroom, 3.00 Bathroom, 1,934 sqft
Residential on 0.13 Acres

Hillview Estates, Strathmore, Alberta

Spacious 4-Bedroom Home in Desirable Hilltop Estates, Strathmore
Welcome to this 4-level split located in the sought-after community of Hilltop Estates. This spacious home offers 4 bedrooms and 3 full bathrooms, perfect for growing families or those needing extra space.

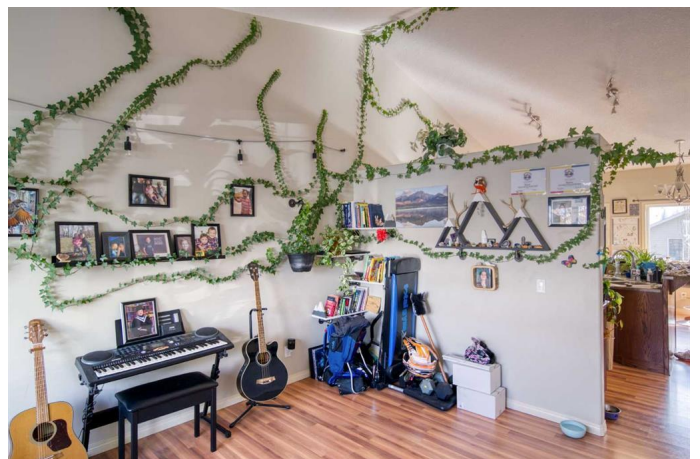
Step inside to a bright and inviting layout featuring a cozy gas fireplace, ideal for relaxing evenings. The upper level includes 3 generously sized bedrooms, including a primary suite with 4-piece ensuite and the convenience of a second-floor laundry.

Enjoy outdoor living in the fully fenced backyard, perfect for kids, pets, and entertaining. A double attached garage provides ample parking and storage. With a thoughtful layout and situated in one of Strathmore's most established neighborhoods, this home offers comfort, space, and a prime location. Don't miss this opportunity to live in Hilltop Estates!

Built in 2005

Essential Information

MLS® #	A2208819
Price	\$515,000
Bedrooms	4
Bathrooms	3.00



Full Baths	3
Square Footage	1,934
Acres	0.13
Year Built	2005
Type	Residential
Sub-Type	Detached
Style	4 Level Split
Status	Active

Community Information

Address	224 Highland Circle
Subdivision	Hillview Estates
City	Strathmore
County	Wheatland County
Province	Alberta
Postal Code	T1P 1V4

Amenities

Parking Spaces	4
Parking	Double Garage Attached, Driveway, Garage Faces Front
# of Garages	2

Interior

Interior Features	Kitchen Island, Laminate Counters
Appliances	None
Heating	Forced Air, Natural Gas
Cooling	None
Fireplace	Yes
# of Fireplaces	1
Fireplaces	Gas, Gas Log
Has Basement	Yes
Basement	Partially Finished, See Remarks

Exterior

Exterior Features	Private Yard, Rain Gutters
Lot Description	Landscaped
Roof	Asphalt Shingle
Construction	Brick, Vinyl Siding
Foundation	Poured Concrete

Additional Information

Date Listed	April 4th, 2025
Days on Market	1
Zoning	R1

Listing Details

Listing Office RE/MAX Real Estate (Mountain View)

Data is supplied by Pillar 9â„¸ MLSÂ® System. Pillar 9â„¸ is the owner of the copyright in its MLSÂ® System. Data is deemed reliable but is not guaranteed accurate by Pillar 9â„¸. The trademarks MLSÂ®, Multiple Listing ServiceÂ® and the associated logos are owned by The Canadian Real Estate Association (CREA) and identify the quality of services provided by real estate professionals who are members of CREA. Used under license.