

\$424,900 - 7006 115b Street, Grande Prairie

MLS® #A2208045

\$424,900

5 Bedroom, 2.00 Bathroom, 1,104 sqft
Residential on 0.03 Acres

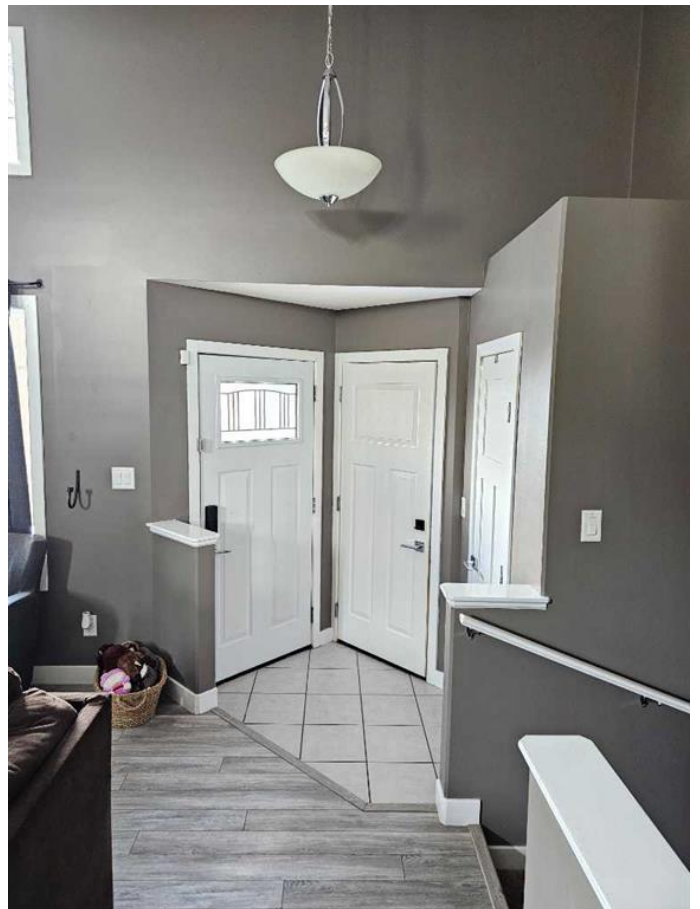
Pinnacle Ridge., Grande Prairie, Alberta

This well maintained home is ready for you! The bright front living room features large windows for plenty of natural light. The open-concept kitchen and dining area offer ample cabinetry, and direct access to a deck—perfect for entertaining and relaxing. Beautiful tiled backsplash & stainless steel appliances compliment the gorgeous cream grey cabinets. Upstairs, you'll find three bedrooms, including a primary suite with a private ensuite & large walk-in closet, plus a full main bath. The basement is partially developed and awaits your finishing touches, two good sized bedrooms are already started. A double garage provides plenty of parking & lots of storage shelving, plus it is heated. Yard is fully fenced and landscaped with a nice large deck to enjoy.

Built in 2013

Essential Information

| | |
|----------------|-------------|
| MLS® # | A2208045 |
| Price | \$424,900 |
| Bedrooms | 5 |
| Bathrooms | 2.00 |
| Full Baths | 2 |
| Square Footage | 1,104 |
| Acres | 0.03 |
| Year Built | 2013 |
| Type | Residential |



| | |
|----------|----------|
| Sub-Type | Detached |
| Style | Bi-Level |
| Status | Active |

Community Information

| | |
|-------------|------------------|
| Address | 7006 115b Street |
| Subdivision | Pinnacle Ridge. |
| City | Grande Prairie |
| County | Grande Prairie |
| Province | Alberta |
| Postal Code | T8W0J1 |

Amenities

| | |
|----------------|------------------------|
| Parking Spaces | 4 |
| Parking | Double Garage Attached |
| # of Garages | 2 |

Interior

| | |
|-------------------|--|
| Interior Features | See Remarks |
| Appliances | Dishwasher, Electric Stove, Refrigerator, Washer/Dryer |
| Heating | Forced Air |
| Cooling | None |
| Has Basement | Yes |
| Basement | Full, Partially Finished |

Exterior

| | |
|-------------------|-----------------|
| Exterior Features | Other |
| Lot Description | City Lot |
| Roof | Asphalt Shingle |
| Construction | Concrete |
| Foundation | Poured Concrete |

Additional Information

| | |
|----------------|-----------------|
| Date Listed | April 2nd, 2025 |
| Days on Market | 6 |
| Zoning | RS |

Listing Details

| | |
|----------------|-----------------------|
| Listing Office | RE/MAX Grande Prairie |
|----------------|-----------------------|

Data is supplied by Pillar 9â„¸ MLSÂ® System. Pillar 9â„¸ is the owner of the copyright in its MLSÂ® System. Data is deemed reliable but is not guaranteed accurate by Pillar 9â„¸. The trademarks MLSÂ®, Multiple Listing ServiceÂ® and the associated logos are owned by The Canadian Real Estate Association (CREA) and identify the quality of services provided by real estate professionals who are members of CREA. Used under license.