

\$2,300 - 9450 Lakeland Drive, Grande Prairie

MLS® #A2207636

\$2,300

4 Bedroom, 2.00 Bathroom, 1,033 sqft

Rental on 0.00 Acres

Lakeland., Grande Prairie, Alberta

4 bedroom + office full house in Lakeland!
Open living, kitchen and dining area. Full bathroom located on the main floor along with Primary bedroom, and two spare bedrooms. Access to fully fenced south facing backyard off the mid-level.

1 more bedroom located in the basement, plus an office! Large living area with a gas fireplace, bathroom and laundry also in the basement.

Parking pad located in the back.

Application required prior to viewing

Pet considered with a \$50/month pet fee!

Utilities not included.



Essential Information

MLS® # A2207636

Price \$2,300

Bedrooms 4

Bathrooms 2.00

Full Baths 2

Square Footage 1,033

Acres 0.00

Type Rental

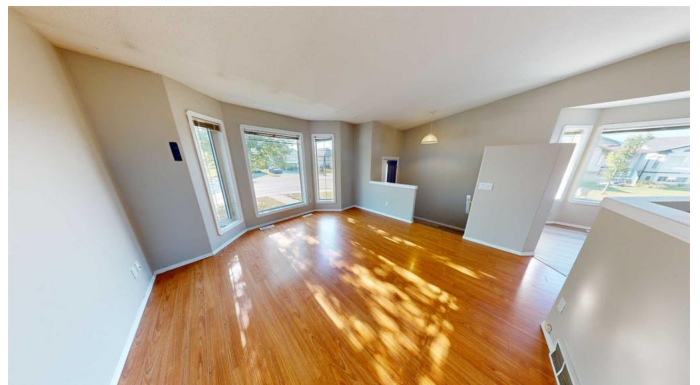
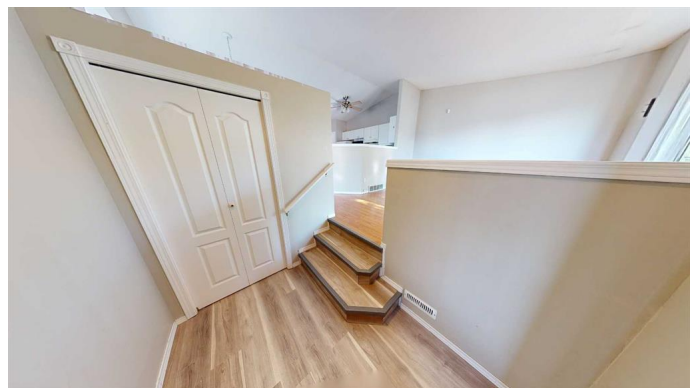
Status Active

Community Information

Address 9450 Lakeland Drive

Subdivision Lakeland.

City Grande Prairie



County	Grande Prairie
Province	Alberta
Postal Code	T8X1N5

Amenities

Parking	Parking Pad
---------	-------------

Interior

Appliances	Dishwasher, Oven, Range Hood, Refrigerator, Stove(s), Washer/Dryer
------------	--

Exterior

Roof	Asphalt Shingle
------	-----------------

Additional Information

Date Listed	April 1st, 2025
-------------	-----------------

Days on Market	5
----------------	---

Listing Details

Listing Office	Grassroots Realty Group Ltd.
----------------	------------------------------

Data is supplied by Pillar 9â„¢ MLSÂ® System. Pillar 9â„¢ is the owner of the copyright in its MLSÂ® System. Data is deemed reliable but is not guaranteed accurate by Pillar 9â„¢. The trademarks MLSÂ®, Multiple Listing ServiceÂ® and the associated logos are owned by The Canadian Real Estate Association (CREA) and identify the quality of services provided by real estate professionals who are members of CREA. Used under license.