

# \$229,900 - 4108b 60 Street, Camrose

MLS® #A2207587

## \$229,900

3 Bedroom, 2.00 Bathroom, 1,132 sqft  
Residential on 0.08 Acres

Marler, Camrose, Alberta

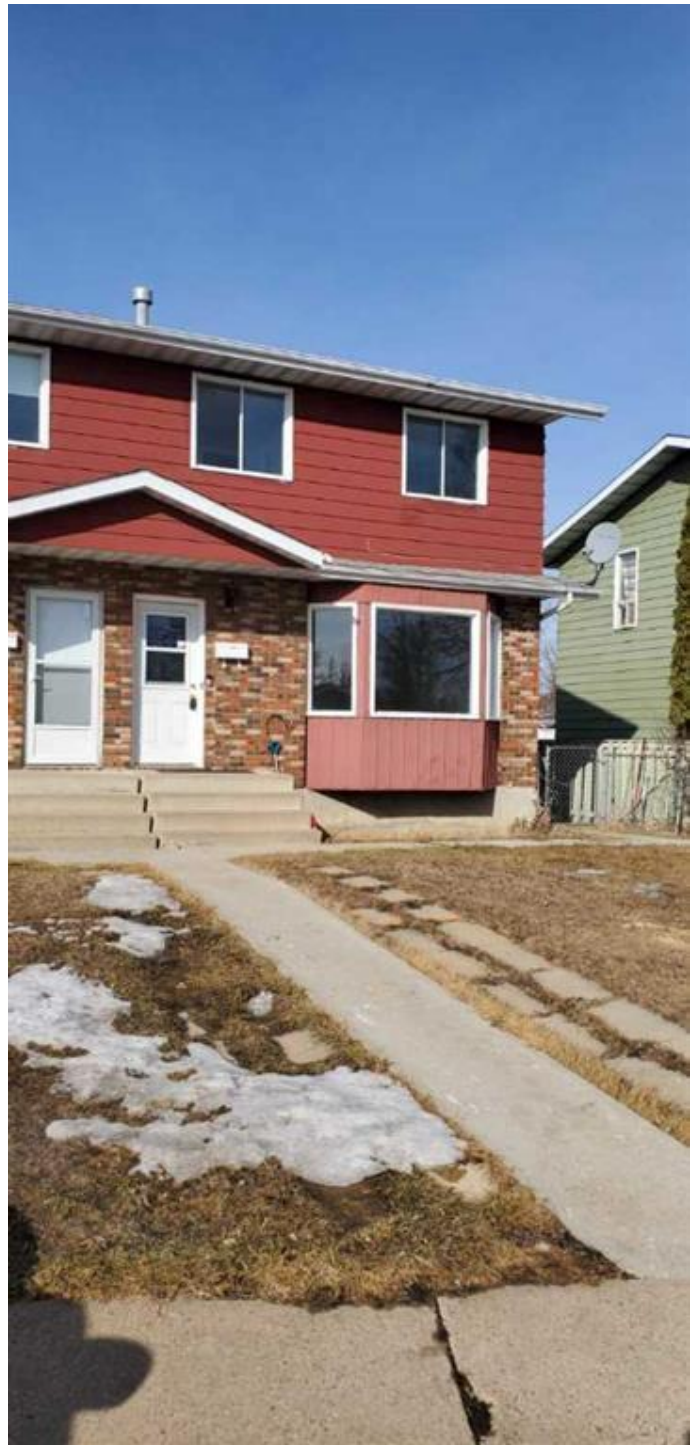
Visit REALTOR® Website for additional information. This half duplex located in the Marler Area across from Spaceship Park has been renovated with new vinyl flooring. Freshly painted. Updated electrical and light fixtures. New 4pc bathroom. Furnace is 4yrs old (recently cleaned). Shingles are approx. 10yrs old.

Backyard is chain link fenced with space to park in back or on front street. Basement has a partially finished bedroom with more space to complete how you want. This is in a great location to schools and Rec. Center. Excellent opportunity for a first-time home or income property.

Built in 1976

### Essential Information

MLS® #	A2207587
Price	\$229,900
Bedrooms	3
Bathrooms	2.00
Full Baths	1
Half Baths	1
Square Footage	1,132
Acres	0.08
Year Built	1976
Type	Residential
Sub-Type	Duplex
Style	2 Storey, Side by Side



Status Active

### Community Information

Address 4108b 60 Street  
Subdivision Marler  
City Camrose  
County Camrose  
Province Alberta  
Postal Code T4V 3G7

### Amenities

Parking Spaces 2  
Parking Off Street

### Interior

Interior Features No Smoking Home, Storage  
Appliances Dryer, Range, Range Hood,  
Heating Forced Air  
Cooling None  
Fireplaces None  
Has Basement Yes  
Basement Full, Partially Finished

### Exterior

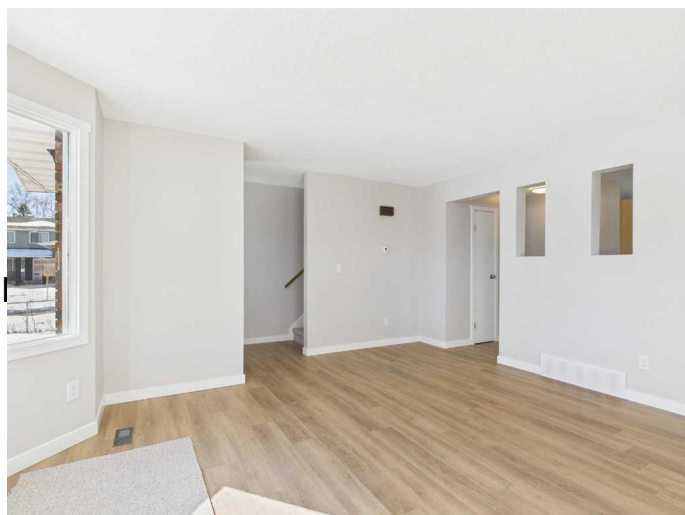
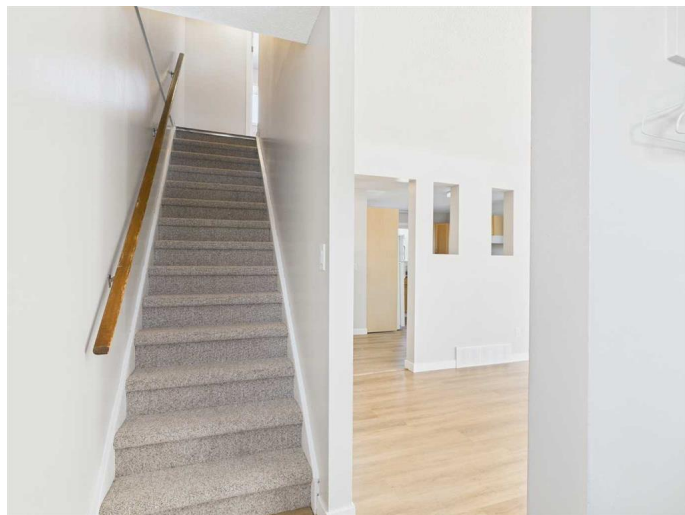
Exterior Features None  
Lot Description Back Lane, Back Yard, City Lot, Front Yard, Irregular Lot, Lawn, Street Lighting  
Roof Asphalt Shingle  
Construction Concrete, Wood Frame  
Foundation Poured Concrete

### Additional Information

Date Listed April 2nd, 2025  
Days on Market 5  
Zoning R3

### Listing Details

Listing Office PG Direct Realty Ltd.



the associated logos are owned by The Canadian Real Estate Association (CREA) and identify the quality of services provided by real estate professionals who are members of CREA. Used under license.