

\$868,000 - 21045 480 Township, Rural Camrose County

MLS® #A2206677

\$868,000

4 Bedroom, 2.00 Bathroom, 3,356 sqft
Residential on 3.00 Acres

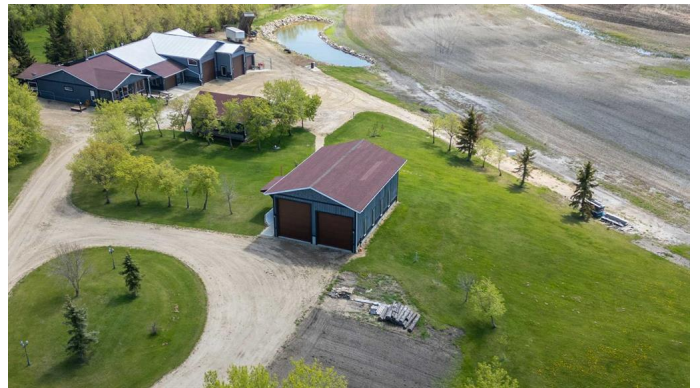
NONE, Rural Camrose County, Alberta

Wait! What?! This place is amazing ! Take a minute and have a look at this custom home on 3 acres just 15 minutes from Camrose. This home offer 4 generous sized bedrooms, huge living room with fireplace and a spacious kitchen with fireplace too. You will be amazed at the open floor plan with room for the entire family. This property offers several shop options for the hobbyist as well as plenty of room for the toys. 16X30 Attached Garage, 26X28 Attached Shop, 24X28 Detached Garage and 28X40 Detached Shop offer plenty of opportunity for hobbies and equipment. This property is nicely landscaped and accessible on a well maintained driveway. This is One Of A Kind !

Built in 2017

Essential Information

MLS® #	A2206677
Price	\$868,000
Bedrooms	4
Bathrooms	2.00
Full Baths	2
Square Footage	3,356
Acres	3.00
Year Built	2017
Type	Residential
Sub-Type	Detached
Style	Acreage with Residence, Bungalow



Status Active

Community Information

Address 21045 480 Township
Subdivision NONE
City Rural Camrose County
County Camrose County
Province Alberta
Postal Code T0B 0G0

Amenities

Parking Spaces 8
Parking Double Garage Attached, Double Garage Detached, Driveway, Insulated, Single Garage Attached, Additional Parking, Covered
of Garages 8

Interior

Interior Features Central Vacuum, French Door, Granite Counters, Kitchen Island, Vinyl Windows, Walk-In Closet(s)
Appliances Dishwasher, Refrigerator, Stove(s), Washer/Dryer, Freezer
Heating High Efficiency, In Floor, Fireplace(s)
Cooling None
Fireplace Yes
of Fireplaces 2
Fireplaces Gas, Living Room, Mantle, Wood Burning, Double Sided, Glass Doors, Kitchen, Masonry
Basement None

Exterior

Exterior Features Garden, Private Yard
Lot Description Few Trees, Front Yard, Garden
Roof Asphalt Shingle
Construction Wood Frame
Foundation Slab

Additional Information

Date Listed March 31st, 2025
Days on Market 7
Zoning CR

Listing Details

Listing Office RE/MAX Real Estate (Edmonton) Ltd.

Data is supplied by Pillar 9â,,ç MLSÂ® System. Pillar 9â,,ç is the owner of the copyright in its MLSÂ® System. Data is deemed reliable but is not guaranteed accurate by Pillar 9â,,ç. The trademarks MLSÂ®, Multiple Listing ServiceÂ® and the associated logos are owned by The Canadian Real Estate Association (CREA) and identify the quality of services provided by real estate professionals who are members of CREA. Used under license.