

\$8,274,500 - Nw3-53- 23-w4, Sherwood Park

MLS® #A2204610

\$8,274,500

0 Bedroom, 0.00 Bathroom,
Land on 12.78 Acres

Sherwood Business Park, Sherwood Park,
Alberta

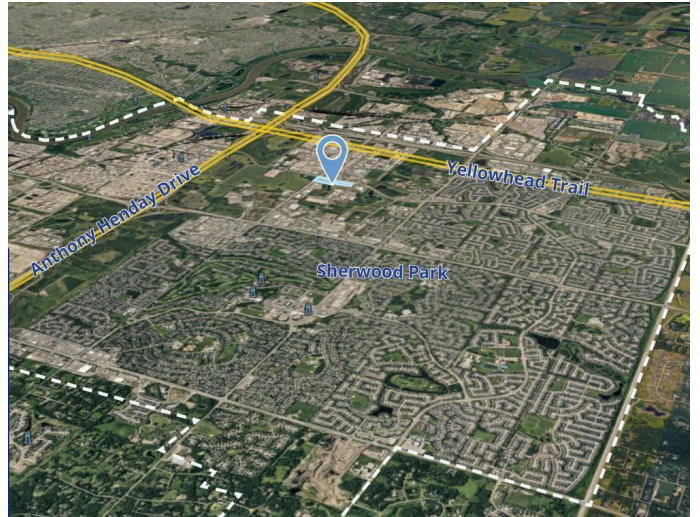
Click brochure link for more details** This up to 12.78-acre development opportunity in northwest Sherwood Park consists of Parcel 1 (8.71 acres) and Parcel 2 (4.07 acres), offering high-visibility corner exposure near Anthony Henday Drive in a rapidly expanding commercial district. Surrounded by established retail amenities, including Costco Wholesale, the site is well-positioned for future development in a high-growth area. With excellent accessibility and a desirable location, this property presents a prime opportunity for investors and developers looking to capitalize on its potential.

Essential Information

| | |
|-----------|-----------------|
| MLS® # | A2204610 |
| Price | \$8,274,500 |
| Bathrooms | 0.00 |
| Acres | 12.78 |
| Type | Land |
| Sub-Type | Commercial Land |
| Status | Active |

Community Information

| | |
|-------------|------------------------|
| Address | Nw3-53- 23-w4 |
| Subdivision | Sherwood Business Park |
| City | Sherwood Park |
| County | Strathcona County |



| | |
|-------------|---------|
| Province | Alberta |
| Postal Code | T8H 1B4 |

Additional Information

| | |
|----------------|------------------|
| Date Listed | March 24th, 2025 |
| Days on Market | 28 |
| Zoning | C2 |

Listing Details

| | |
|----------------|-----------------|
| Listing Office | Honestdoor Inc. |
|----------------|-----------------|

Data is supplied by Pillar 9â„¢ MLS® System. Pillar 9â„¢ is the owner of the copyright in its MLS® System. Data is deemed reliable but is not guaranteed accurate by Pillar 9â„¢. The trademarks MLS®, Multiple Listing Service® and the associated logos are owned by The Canadian Real Estate Association (CREA) and identify the quality of services provided by real estate professionals who are members of CREA. Used under license.