

\$549,900 - 4a, 6354 700 Township, Grovedale

MLS® #A2200590

\$549,900

5 Bedroom, 3.00 Bathroom, 1,490 sqft

Residential on 1.55 Acres

NONE, Grovedale, Alberta

Escape the hustle and bustle of city life and enjoy peace and tranquility with this beautiful 5-bedroom, 2.5-bathroom home nestled on a quiet 1.55-acre property in Grovedale, only 15 Minutes from Grande Prairie. The serene, treed surroundings offer the perfect backdrop for relaxation and outdoor enjoyment. Entering your new home you will appreciate the hardwood boasted on the main floor, infloor heat as well as updated high efficiency furnace with UV filtration system. Kitchen has updated stainless steel appliances, including must have gas stove, adequate counter + cabinet space. Dining room is massive allowing for a table of any shape or size for all occasions. Off the dining is a sunroom, or could be converted into a mudroom like entrance. Remainder of main floor is made up of large full bathroom with claw soaker tube, and master bedroom with vaulted ceilings, walk in closet and full en-suite. Heading up stairs you will be pleased with with two large bedrooms. IICF foundation basement is a fully finished walk-out basement that provides living room, two bedrooms, laundry room, and a half bathroom. One bedroom has plumbing behind the wall for future kitchen/suite or wet bar. Detached double car garage has concrete floor, wood stove, office attached and hot tub just outside great for unwinding after a long day. Yard is nicely treed, with firepit area wonderful for entertaining, and shed with power. Shingles where done in 2023! Booking your viewing today of this affordable acreage with all the



bells and whistles!

Built in 2000

Essential Information

| | |
|----------------|----------------------------------|
| MLS® # | A2200590 |
| Price | \$549,900 |
| Bedrooms | 5 |
| Bathrooms | 3.00 |
| Full Baths | 2 |
| Half Baths | 1 |
| Square Footage | 1,490 |
| Acres | 1.55 |
| Year Built | 2000 |
| Type | Residential |
| Sub-Type | Detached |
| Style | 2 Storey, Acreage with Residence |
| Status | Active |

Community Information

| | |
|-------------|---------------------------|
| Address | 4a, 6354 700 Township |
| Subdivision | NONE |
| City | Grovedale |
| County | Greenview No. 16, M.D. of |
| Province | Alberta |
| Postal Code | T0H 1X0 |

Amenities

| | |
|--------------|------------------------|
| Parking | Double Garage Detached |
| # of Garages | 2 |

Interior

| | |
|-------------------|--|
| Interior Features | Ceiling Fan(s), No Smoking Home, See Remarks, Separate Entrance, Soaking Tub |
| Appliances | Dishwasher, Dryer, Gas Stove, Refrigerator, Washer |
| Heating | Forced Air, Natural Gas |
| Cooling | None |
| Has Basement | Yes |

Basement Finished, Full, Walk-Out

Exterior

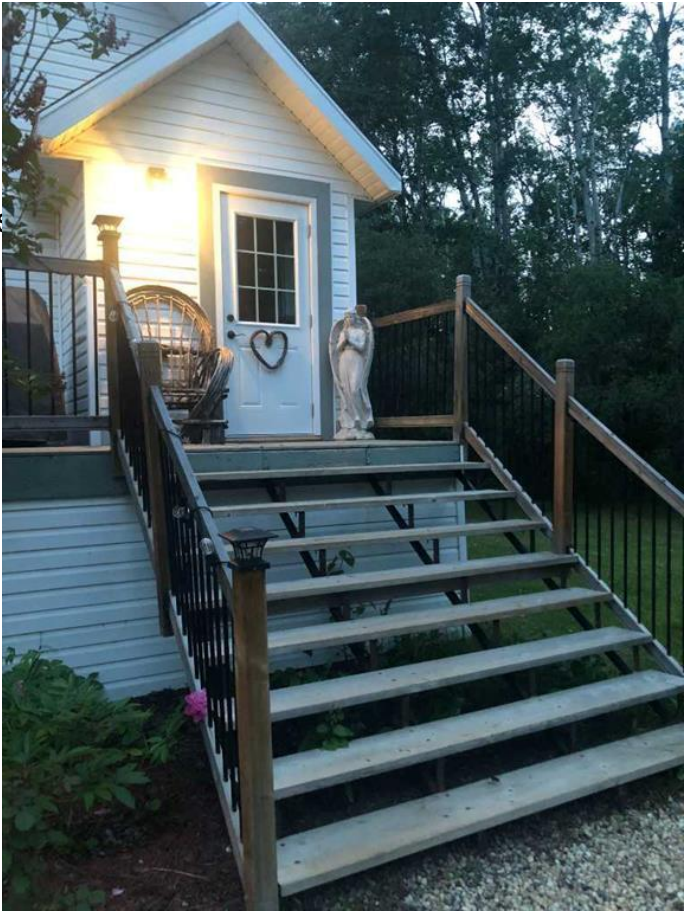
Exterior Features Fire Pit
Lot Description Back Yard, Front Yard, Land
Roof Asphalt Shingle
Construction Mixed
Foundation ICF Block

Additional Information

Date Listed March 10th, 2025
Days on Market 43
Zoning HR

Listing Details

Listing Office RE/MAX Grande Prairie



Data is supplied by Pillar 9â,,ç MLSÂ® System. Pillar 9â,,ç is the owner of the copyright in its MLSÂ® System. Data is deemed reliable but is not guaranteed accurate by Pillar 9â,,ç. The trademarks MLSÂ®, Multiple Listing ServiceÂ® and the associated logos are owned by The Canadian Real Estate Association (CREA) and identify the quality of services provided by real estate professionals who are members of CREA. Used under license.