

# \$799,900 - 359 Woodpark Court Sw, Calgary

MLS® #A2197106

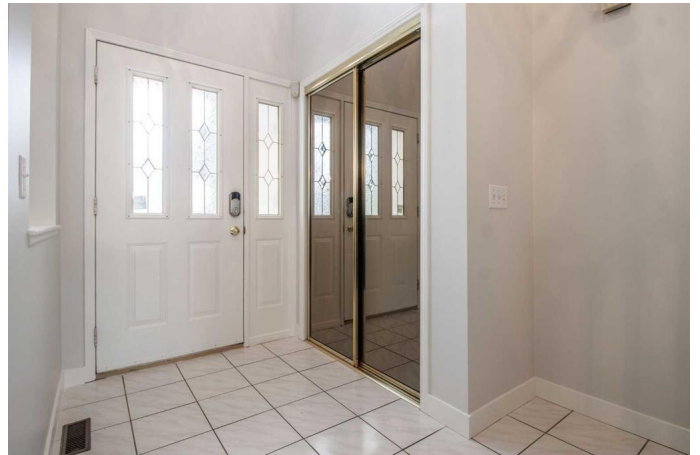
**\$799,900**

4 Bedroom, 4.00 Bathroom, 2,098 sqft

Residential on 0.11 Acres

Woodlands, Calgary, Alberta

Welcome to Your Dream Home in Woodbine! Tucked away in a quiet cul-de-sac, this stunning 4-bedroom, 3.5-bathroom, 2-storey split offers over 3,100 sqft of beautifully developed living space. From the moment you step inside, youâ€™ll be captivated by the soaring vaulted ceilings that bathe the living room in natural light, accentuating the rich hardwood floors and crisp, modern color palette. At the heart of the home, the kitchen is a chefâ€™s delight, featuring a central island, corner pantry, ample cabinetry, expansive counter space, and a skylight that fills the space with warmth. The formal dining room, framed by a charming bay window, provides the perfect setting for memorable gatherings, while French doors lead to an inviting deckâ€”seamlessly blending indoor and outdoor living. Just off the kitchen, the cozy family room with a gas fireplace offers the perfect retreat for relaxation. The main floor is complete with a conveniently located laundry room and a stylish 2-piece powder room tucked away for guests. Upstairs, your private sanctuary awaits! The expansive primary suite is a true escape, featuring a spa-like ensuite with a jetted soaker tub, stand-alone shower, and a generous walk-in closet. Two additional well-appointed bedrooms with ample closet space and a beautifully updated 4-piece bathroom complete this level. The fully finished basement extends your living space with a huge recreation roomâ€”ideal for game nights, movie marathons, or a teenagerâ€™s retreat.



A fourth bedroom and another full 4-piece bath make this level perfect for guests or extended family, with plenty of extra storage to keep things organized. Outside, the south-facing backyard is a sun-drenched oasis! Enjoy your private deck while the pie-shaped lot offers a low-maintenance escape with mature trees and lush landscaping. For parking, the attached double garage plus a spacious driveway with room for two more vehicles ensures convenience. This exceptional home is steps from Fish Creek Park and close to top-rated schools, shopping, parks, and playgrounds—everything your family needs, right at your doorstep. A home of this calibre won't last long—schedule your showing today!

Built in 1992

### Essential Information

MLS® #	A2197106
Price	\$799,900
Bedrooms	4
Bathrooms	4.00
Full Baths	3
Half Baths	1
Square Footage	2,098
Acres	0.11
Year Built	1992
Type	Residential
Sub-Type	Detached
Style	2 Storey Split
Status	Active

### Community Information

Address	359 Woodpark Court Sw
Subdivision	Woodlands
City	Calgary
County	Calgary

Province Alberta  
Postal Code T2W 6E6

### Amenities

Parking Spaces 4  
Parking Concrete Driveway, Double Garage Attached, Garage Faces Front  
# of Garages 2

### Interior

Interior Features Breakfast Bar, Closet Organizers, Jetted Tub, Open Floorplan, Recessed Lighting, Storage  
Appliances Dishwasher, Dryer, Microwave, Refrigerator, Stove(s), Washer  
Heating Forced Air, Natural Gas  
Cooling Central Air  
Fireplace Yes  
# of Fireplaces 1  
Fireplaces Gas, Mantle, Brick Facing  
Has Basement Yes  
Basement Finished, Full

### Exterior

Exterior Features Garden, Private Yard  
Lot Description Back Yard, Cul-De-Sac, Garden, Landscaped, Pie Shaped Lot, Street Lighting  
Roof Asphalt Shingle  
Construction Brick, Stucco, Wood Frame  
Foundation Poured Concrete

### Additional Information

Date Listed February 27th, 2025  
Days on Market 54  
Zoning R-CG

### Listing Details

Listing Office Real Broker

Data is supplied by Pillar 9â„¢ MLSÂ® System. Pillar 9â„¢ is the owner of the copyright in its MLSÂ® System. Data is deemed reliable but is not guaranteed accurate by Pillar 9â„¢. The trademarks MLSÂ®, Multiple Listing ServiceÂ® and the associated logos are owned by The Canadian Real Estate Association (CREA) and identify the quality of services provided by real estate professionals who are members of CREA. Used under license.