

\$524,999 - 88 Abingdon Crescent Ne, Calgary

MLS® #A2192693

\$524,999

3 Bedroom, 2.00 Bathroom, 1,270 sqft

Residential on 0.09 Acres

Abbeydale, Calgary, Alberta

Beautifully Renovated Home in Abbeydale

This charming home has been upgraded with new siding and a new roof on both the house and the oversized double detached garage.

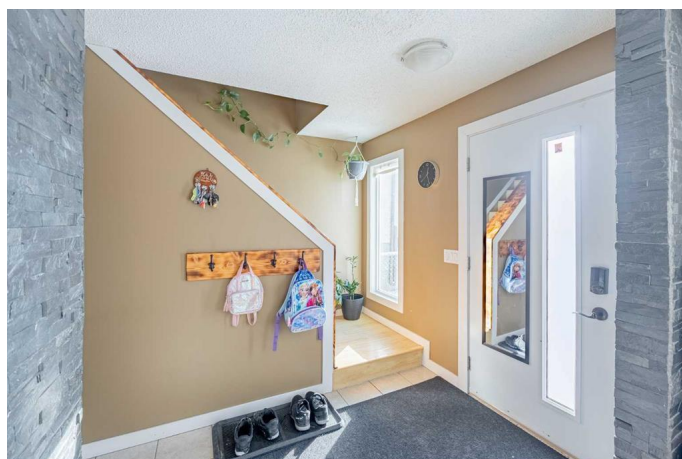
Step inside to discover stylish custom stone feature walls, a barn wood accent wall and a cozy custom bench in the kitchen, perfect for family meals. The bright white kitchen features stainless steel appliances and a double oven, making it a dream for any home chef. Enjoy new baseboards, casings and updated bathrooms, so you can move in stress-free.

With a private basement side entrance and a large patio door leading to an oversized deck and spacious backyard, this home is perfect for entertaining. Plus, lots of natural light and low maintenance laminate flooring make upkeep a breeze. Located just steps from a playground and close to all amenities, this home would not last long. Book your showing today!

Built in 1980

Essential Information

| | |
|----------------|-----------|
| MLS® # | A2192693 |
| Price | \$524,999 |
| Bedrooms | 3 |
| Bathrooms | 2.00 |
| Full Baths | 1 |
| Half Baths | 1 |
| Square Footage | 1,270 |



| | |
|------------|-------------|
| Acres | 0.09 |
| Year Built | 1980 |
| Type | Residential |
| Sub-Type | Detached |
| Style | 2 Storey |
| Status | Active |

Community Information

| | |
|-------------|-------------------------|
| Address | 88 Abingdon Crescent Ne |
| Subdivision | Abbeydale |
| City | Calgary |
| County | Calgary |
| Province | Alberta |
| Postal Code | T2A 6S3 |

Amenities

| | |
|----------------|------------------------|
| Parking Spaces | 2 |
| Parking | Double Garage Detached |
| # of Garages | 2 |

Interior

| | |
|-------------------|--|
| Interior Features | Built-in Features |
| Appliances | Dishwasher, Electric Stove, Range Hood, Refrigerator, Washer/Dryer |
| Heating | Forced Air, Natural Gas |
| Cooling | None |
| Has Basement | Yes |
| Basement | Exterior Entry, Finished, Full |

Exterior

| | |
|-------------------|---|
| Exterior Features | Private Yard, Storage |
| Lot Description | Back Lane, Back Yard, Front Yard, Landscaped, Lawn, Low Maintenance Landscape |
| Roof | Asphalt Shingle |
| Construction | Concrete, Vinyl Siding, Wood Frame |
| Foundation | Poured Concrete |

Additional Information

| | |
|----------------|--------------------|
| Date Listed | February 5th, 2025 |
| Days on Market | 74 |

Zoning R-CG

Listing Details

Listing Office eXp Realty

Data is supplied by Pillar 9â„¢ MLS® System. Pillar 9â„¢ is the owner of the copyright in its MLS® System. Data is deemed reliable but is not guaranteed accurate by Pillar 9â„¢. The trademarks MLS®, Multiple Listing Service® and the associated logos are owned by The Canadian Real Estate Association (CREA) and identify the quality of services provided by real estate professionals who are members of CREA. Used under license.