

\$230,000 - 669 Springside Crescent, Rural Ponoka County

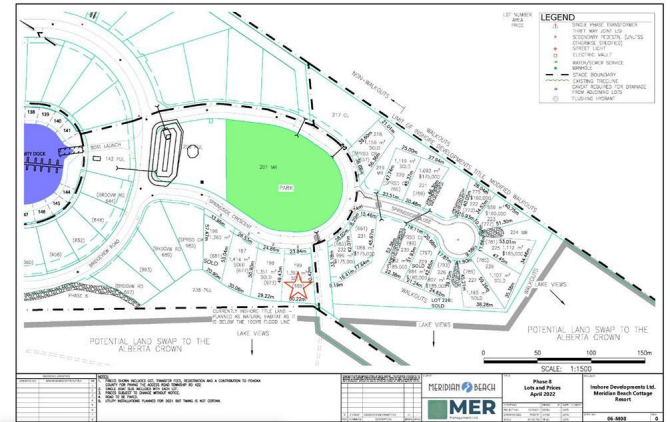
MLS® #A2183094

\$230,000

0 Bedroom, 0.00 Bathroom,
Land on 0.34 Acres

Meridian Beach, Rural Ponoka County, Alberta

LAKE VIEW LOT-OUTSTANDING BUILDING LOT in the lake community of **MERIDIAN BEACH!** This roughly 1/3 acre lot is backing onto a reserve and Gull Lake, it's steps from the playground and private beach. The property is ready for your dream home and comes with it's own boat slip in the South Marina- bring your boat and enjoy the lake! There are many great features to enjoy in the community, including a tennis court, community hall, walking trails, pavilions, and a nearby restaurant and convenience store.



Essential Information

MLS® #	A2183094
Price	\$230,000
Bathrooms	0.00
Acres	0.34
Type	Land
Sub-Type	Residential Land
Status	Active

Community Information

Address	669 Springside Crescent
Subdivision	Meridian Beach
City	Rural Ponoka County
County	Ponoka County
Province	Alberta



Postal Code T4L 2N3

Amenities

Waterfront Beach Access, Lake

Exterior

Lot Description Level, Lake

Additional Information

Date Listed December 10th, 2024

Days on Market 131

Zoning R1

HOA Fees Freq. ANN

Listing Details

Listing Office RE/MAX real estate central alberta

Data is supplied by Pillar 9â„¢ MLSÂ® System. Pillar 9â„¢ is the owner of the copyright in its MLSÂ® System. Data is deemed reliable but is not guaranteed accurate by Pillar 9â„¢. The trademarks MLSÂ®, Multiple Listing ServiceÂ® and the associated logos are owned by The Canadian Real Estate Association (CREA) and identify the quality of services provided by real estate professionals who are members of CREA. Used under license.