

\$155,000 - 2, 53114 Highway 31, Rural Parkland County

MLS® #A2167688

\$155,000

4 Bedroom, 1.00 Bathroom, 766 sqft

Residential on 0.33 Acres

NONE, Rural Parkland County, Alberta

House on full basement on a large lot in Seba beach.

Built in 1950

Essential Information

MLS® # A2167688

Price \$155,000

Bedrooms 4

Bathrooms 1.00

Full Baths 1

Square Footage 766

Acres 0.33

Year Built 1950

Type Residential

Sub-Type Detached

Style Bungalow

Status Active

Community Information

Address 2, 53114 Highway 31

Subdivision NONE

City Rural Parkland County

County Parkland County

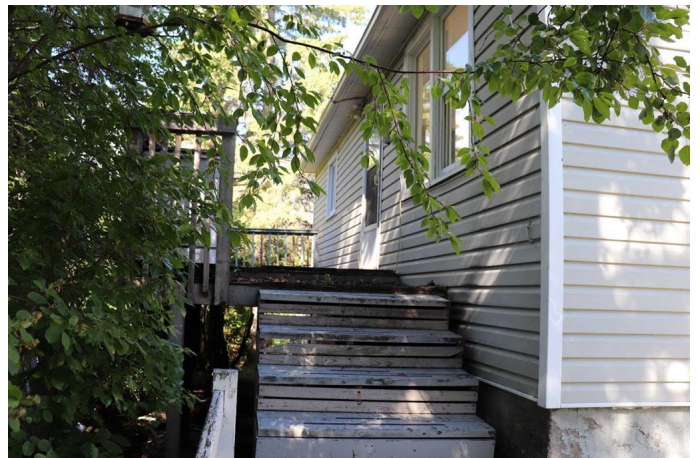
Province Alberta

Postal Code T0E 2B0

Amenities

Parking Spaces 2

Parking Driveway, None



Interior

Interior Features	Ceiling Fan(s)
Appliances	None
Heating	Forced Air, Natural Gas
Cooling	None
Has Basement	Yes
Basement	Finished, Full

Exterior

Exterior Features	Garden
Lot Description	Rectangular Lot
Roof	Asphalt Shingle
Construction	Vinyl Siding, Wood Siding
Foundation	Poured Concrete

Additional Information

Date Listed	September 23rd, 2024
Days on Market	211
Zoning	CRD

Listing Details

Listing Office	RE/MAX BOXSHAW FOUR REALTY
----------------	----------------------------

Data is supplied by Pillar 9â„¢ MLSÂ® System. Pillar 9â„¢ is the owner of the copyright in its MLSÂ® System. Data is deemed reliable but is not guaranteed accurate by Pillar 9â„¢. The trademarks MLSÂ®, Multiple Listing ServiceÂ® and the associated logos are owned by The Canadian Real Estate Association (CREA) and identify the quality of services provided by real estate professionals who are members of CREA. Used under license.