

\$479,000 - 835034 Range Road 234, Rural Peace No. 135, M.D. of

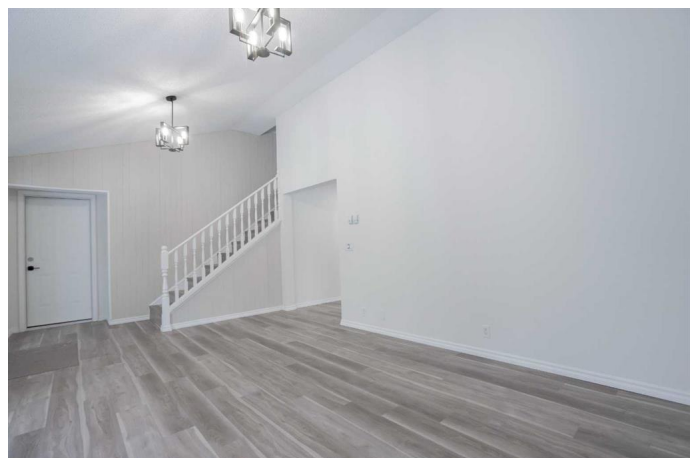
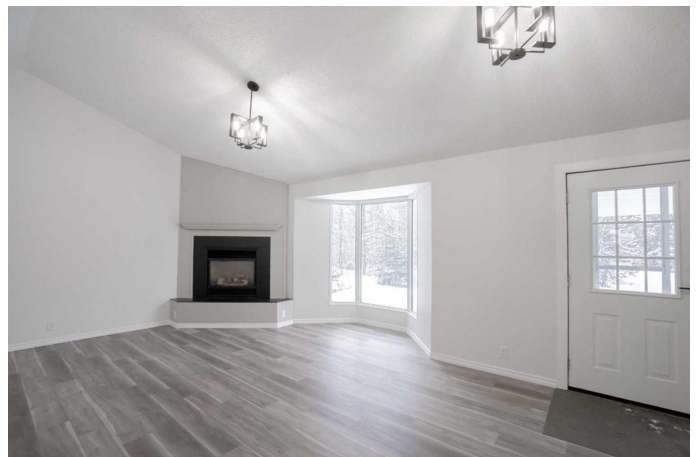
MLS® #A2151683

\$479,000

3 Bedroom, 3.00 Bathroom, 2,156 sqft
Residential on 6.57 Acres

NONE, Rural Peace No. 135, M.D. of, Alberta

Looking for a acreage close to town in a newly renovated turn key acreage? Look no further this 2 story home is 2165 square feet and sits on 6.57 acres. You may have seen this home before but never like this! This home just went through a huge list of renovation making this a gorgeous property. Coming up the walkway into your beautiful home you will notice all new beautiful flooring and paint throughout the home, massive vaulted ceilings newly redone fireplace feature in the spacious Livingroom. Through the living room you have a huge separate dining room with more than enough room for the biggest table you can get, as well as all new lighting features throughout! The dining room flows seamlessly right into the large kitchen with tons of space for the chefs needs. Also on your main floor you have a beautiful 3 piece bathroom and a office! Just down from the office you will find a door leading outside to your massive covered patio. Headed upstairs just like downstairs all new flooring and paint throughout as well as a new larger 4 piece bathroom, Huge primary bedroom and ensuite, 2 more additional big bedrooms and upstairs laundry! There is a back door at the end of the hall leading out to a top deck as well overlooking your large yard. Downstairs in the garage you may remember more living space which has been converted back into your heated garage! Outside there is a additional driveway leading to a massive



parking area for large semi parking or room for a large shop to be built. With so much more upgrades and renovations that were done what more could you want on a beautiful acreage that is move in ready! Call today don't miss out on this beauty !

Built in 1978

Essential Information

MLS® #	A2151683
Price	\$479,000
Bedrooms	3
Bathrooms	3.00
Full Baths	3
Square Footage	2,156
Acres	6.57
Year Built	1978
Type	Residential
Sub-Type	Detached
Style	Acreage with Residence, 2 Storey
Status	Active

Community Information

Address	835034 Range Road 234
Subdivision	NONE
City	Rural Peace No. 135, M.D. of
County	Peace No. 135, M.D. of
Province	Alberta
Postal Code	T0H0E0

Amenities

Parking	Double Garage Attached, Off Street, Parking Pad
# of Garages	2

Interior

Interior Features	See Remarks
Appliances	Dishwasher, Gas Stove, Microwave, Refrigerator, Washer/Dryer
Heating	Boiler

Cooling	None
Fireplace	Yes
# of Fireplaces	1
Fireplaces	Gas
Basement	None

Exterior

Exterior Features	Fire Pit, Other
Lot Description	Few Trees, Front Yard, Lawn, Private
Roof	Asphalt Shingle
Construction	Wood Frame
Foundation	Poured Concrete

Additional Information

Date Listed	July 29th, 2024
Days on Market	254
Zoning	Ag

Listing Details

Listing Office	Grassroots Realty Group Ltd.
----------------	------------------------------

Data is supplied by Pillar 9â„¢ MLSÂ® System. Pillar 9â„¢ is the owner of the copyright in its MLSÂ® System. Data is deemed reliable but is not guaranteed accurate by Pillar 9â„¢. The trademarks MLSÂ®, Multiple Listing ServiceÂ® and the associated logos are owned by The Canadian Real Estate Association (CREA) and identify the quality of services provided by real estate professionals who are members of CREA. Used under license.