

# \$500,000 - Lot 2 Plan 9925442 Highway 2, Slave Lake

MLS® #A2134075

**\$500,000**

0 Bedroom, 0.00 Bathroom,  
Land on 94.86 Acres

NONE, Slave Lake, Alberta

Looking for development land? This parcel just off of Highway 2, in a great location and easily accessible, within the Town of Slave Lake boundaries. This 94 acre parcel has many development possibilities with access to it off of MD office turnoff. This parcel can be developed for commercial, industrial or residential depending on what development interest a buyer would have. 94 acres in a great location at a great price!!

## Essential Information

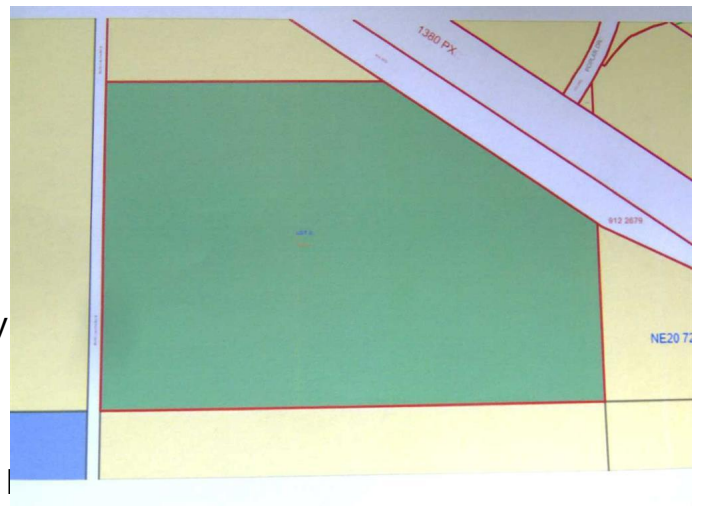
|           |                 |
|-----------|-----------------|
| MLS® #    | A2134075        |
| Price     | \$500,000       |
| Bathrooms | 0.00            |
| Acres     | 94.86           |
| Type      | Land            |
| Sub-Type  | Commercial Land |
| Status    | Active          |

## Community Information

|             |                               |
|-------------|-------------------------------|
| Address     | Lot 2 Plan 9925442 Highway    |
| Subdivision | NONE                          |
| City        | Slave Lake                    |
| County      | Lesser Slave River No. 124, I |
| Province    | Alberta                       |
| Postal Code | T0G 2A0                       |

## Amenities

|           |                       |
|-----------|-----------------------|
| Utilities | Natural Gas Available |
|-----------|-----------------------|



## **Additional Information**

Date Listed            May 20th, 2024  
Days on Market        318  
Zoning                  Urban Reserve - Commercia

## **Listing Details**

Listing Office            CENTURY 21 NORTHERN REALTY

Data is supplied by Pillar 9â„¸ MLSÂ® System. Pillar 9â„¸ is the owner of the copyright in its MLSÂ® System. Data is deemed reliable but is not guaranteed accurate by Pillar 9â„¸. The trademarks MLSÂ®, Multiple Listing ServiceÂ® and the associated logos are owned by The Canadian Real Estate Association (CREA) and identify the quality of services provided by real estate professionals who are members of CREA. Used under license.