

\$300,000 - Lot 1 Widewater Drive, Widewater

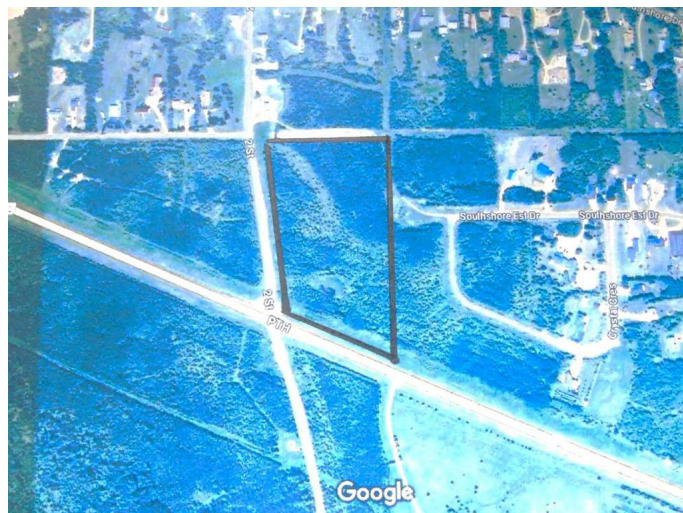
MLS® #A2134033

\$300,000

0 Bedroom, 0.00 Bathroom,
Land on 13.66 Acres

NONE, Widewater, Alberta

13 acres of prime residential land on the Widewater Drive road. Only 12 minutes from Slave Lake, only minutes away from the lakeshore and boat launch of Lesser Slave Lake. Easy access to ATV trails and hunting areas south of highway 2, this parcel of land is in a strategic location for many outdoor and recreational activities. Can be built to suit any buyer's developmental tastes or the parcel can also be subdivided. Country living at it's finest and only minutes away from all the amenities!!



Essential Information

| | |
|-----------|------------------|
| MLS® # | A2134033 |
| Price | \$300,000 |
| Bathrooms | 0.00 |
| Acres | 13.66 |
| Type | Land |
| Sub-Type | Residential Land |
| Status | Active |

Community Information

| | |
|-------------|-------------------------------------|
| Address | Lot 1 Widewater Drive |
| Subdivision | NONE |
| City | Widewater |
| County | Lesser Slave River No. 124, M.D. of |
| Province | Alberta |
| Postal Code | T0G2M0 |

Additional Information

| | |
|----------------|----------------------|
| Date Listed | May 20th, 2024 |
| Days on Market | 320 |
| Zoning | Residential - Vacant |

Listing Details

Listing Office CENTURY 21 NORTHERN REALTY

Data is supplied by Pillar 9â,,ç MLSÂ® System. Pillar 9â,,ç is the owner of the copyright in its MLSÂ® System. Data is deemed reliable but is not guaranteed accurate by Pillar 9â,,ç. The trademarks MLSÂ®, Multiple Listing ServiceÂ® and the associated logos are owned by The Canadian Real Estate Association (CREA) and identify the quality of services provided by real estate professionals who are members of CREA. Used under license.