

\$249,900 - Nw-9-58-11-w5, Rural Woodlands County

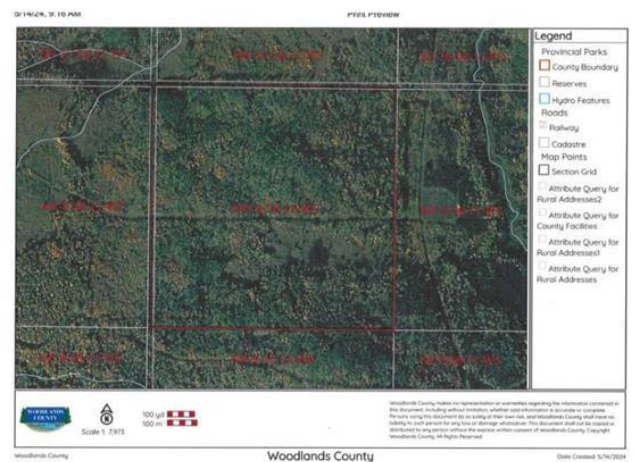
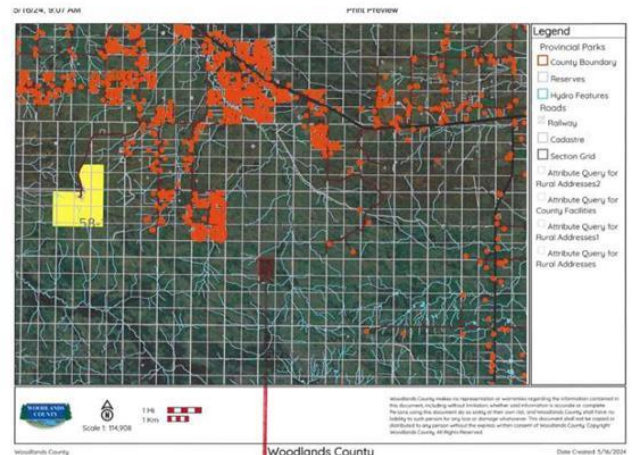
MLS® #A2132920

\$249,900

0 Bedroom, 0.00 Bathroom,
Land on 160.00 Acres

NONE, Rural Woodlands County, Alberta

"SURROUNDED BY CROWN LAND ON ALL SIDES - FULL QUARTER !!!" Want a full quarter section with no neighbors for miles ? This 160 acres is located in Woodlands County , is all bush , and is surrounded by Crown land on all sides and can only be accessed by quad or sled. The perfect location to camp out away from any people. Excellent recreational quarter for hunting or just to get away from it all and be one with nature. Totally private as the nearest road is approximately 2.5 km away. Annual oil lease revenue of \$1900.00 .



Essential Information

| | |
|-----------|------------------|
| MLS® # | A2132920 |
| Price | \$249,900 |
| Bathrooms | 0.00 |
| Acres | 160.00 |
| Type | Land |
| Sub-Type | Residential Land |
| Status | Active |

Community Information

| | |
|-------------|------------------------|
| Address | Nw-9-58-11-w5 |
| Subdivision | NONE |
| City | Rural Woodlands County |
| County | Woodlands County |
| Province | Alberta |
| Postal Code | T7S1N9 |

Additional Information

| | |
|----------------|----------------|
| Date Listed | May 16th, 2024 |
| Days on Market | 329 |
| Zoning | A2 |

Listing Details

| | |
|----------------|-------------------------------|
| Listing Office | RE/MAX ADVANTAGE (WHITECOURT) |
|----------------|-------------------------------|

Data is supplied by Pillar 9â,,ç MLSÂ® System. Pillar 9â,,ç is the owner of the copyright in its MLSÂ® System. Data is deemed reliable but is not guaranteed accurate by Pillar 9â,,ç. The trademarks MLSÂ®, Multiple Listing ServiceÂ® and the associated logos are owned by The Canadian Real Estate Association (CREA) and identify the quality of services provided by real estate professionals who are members of CREA. Used under license.