

\$68,500 - 302b, 1221 Westhaven Drive, Edson

MLS® #A2101262

\$68,500

2 Bedroom, 1.00 Bathroom, 753 sqft

Residential on 0.00 Acres

NONE, Edson, Alberta

Comfortable and affordable Two Bedroom, one bathroom condominium located in Wellington "B" Building in West Haven area. This 3rd floor unit has a balcony approximately 6 years ago and comes with a BI Dishwasher, Stove and Fridge, 1 assigned parking space, common laundry for the building. Located within walking distance to schools and amenities.

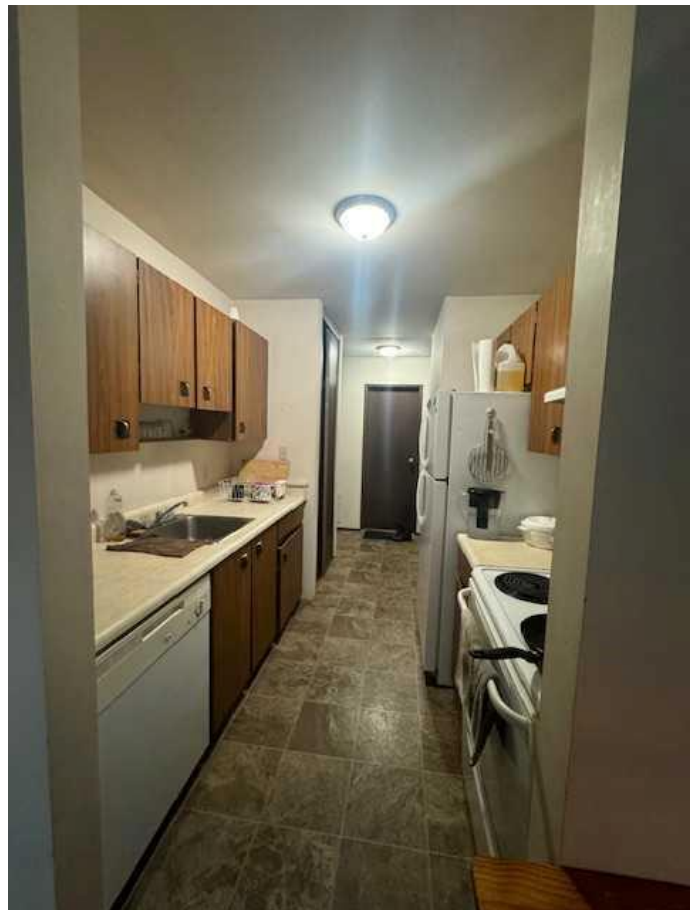
Built in 1981

Essential Information

MLS® #	A2101262
Price	\$68,500
Bedrooms	2
Bathrooms	1.00
Full Baths	1
Square Footage	753
Acres	0.00
Year Built	1981
Type	Residential
Sub-Type	Apartment
Style	Low-Rise(1-4)
Status	Active

Community Information

Address	302b, 1221 Westhaven Drive
Subdivision	NONE
City	Edson



County	Yellowhead County
Province	Alberta
Postal Code	T7E 1P9

Amenities

Amenities	Laundry, Parking, Snow Removal, Trash
Parking Spaces	1
Parking	Stall

Interior

Interior Features	Laminate Counters
Appliances	Dishwasher, Electric Stove, Refrigerator
Heating	Hot Water
Cooling	None
# of Stories	4

Exterior

Exterior Features	Balcony
Roof	Asphalt Shingle
Construction	Wood Frame

Additional Information

Date Listed	February 2nd, 2024
Days on Market	444
Zoning	R3 - High Density Residen

Listing Details

Listing Office	CENTURY 21 TWIN REALTY
----------------	------------------------

Data is supplied by Pillar 9â„¢ MLS® System. Pillar 9â„¢ is the owner of the copyright in its MLS® System. Data is deemed reliable but is not guaranteed accurate by Pillar 9â„¢. The trademarks MLS®, Multiple Listing Service® and the associated logos are owned by The Canadian Real Estate Association (CREA) and identify the quality of services provided by real estate professionals who are members of CREA. Used under license.