

# \$1,850,000 - 2, 60056 732 Township, Sexsmith

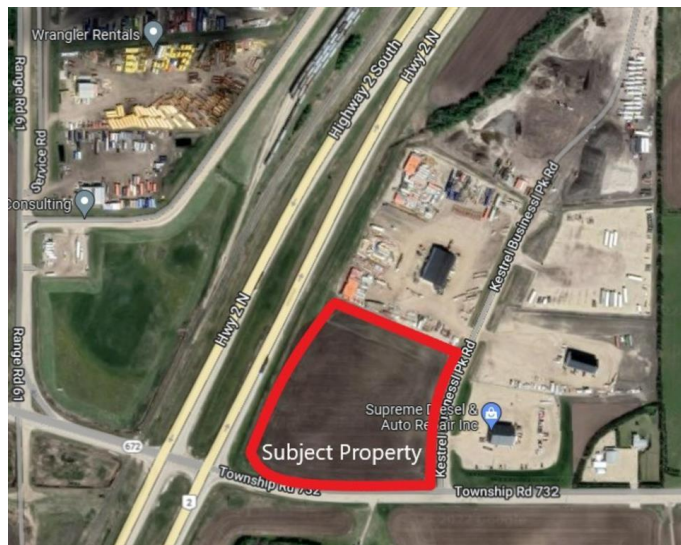
MLS® #A1256546

**\$1,850,000**

0 Bedroom, 0.00 Bathroom,  
Land on 10.01 Acres

NONE, Sexsmith, Alberta

Incredible 10.01 acres of frontage onto Highway 2 and Emerson trail located in the Kestrel Business Park. This Industrial lot zoned RM-4 (Highway Industrial) is well situated to provide quick access to both the Grande Prairie/Clairmont area and B.C. This is a bare land listing being offered at \$185,000 per acre. Call your Commercial REALTOR® today for more information.



## Essential Information

MLS® #	A1256546
Price	\$1,850,000
Bathrooms	0.00
Acres	10.01
Type	Land
Sub-Type	Industrial Land
Status	Active

## Community Information

Address	2, 60056 732 Township
Subdivision	NONE
City	Sexsmith
County	Grande Prairie No. 1, County of
Province	Alberta
Postal Code	T0H 3C0

## Additional Information

Date Listed	September 7th, 2022
-------------	---------------------

Days on Market 936  
Zoning RM-4

### **Listing Details**

Listing Office RE/MAX Grande Prairie

Data is supplied by Pillar 9â„¸ MLSÂ® System. Pillar 9â„¸ is the owner of the copyright in its MLSÂ® System. Data is deemed reliable but is not guaranteed accurate by Pillar 9â„¸. The trademarks MLSÂ®, Multiple Listing ServiceÂ® and the associated logos are owned by The Canadian Real Estate Association (CREA) and identify the quality of services provided by real estate professionals who are members of CREA. Used under license.