

# \$149,900 - 5-23-52-28 Sw, Rural Yellowhead County

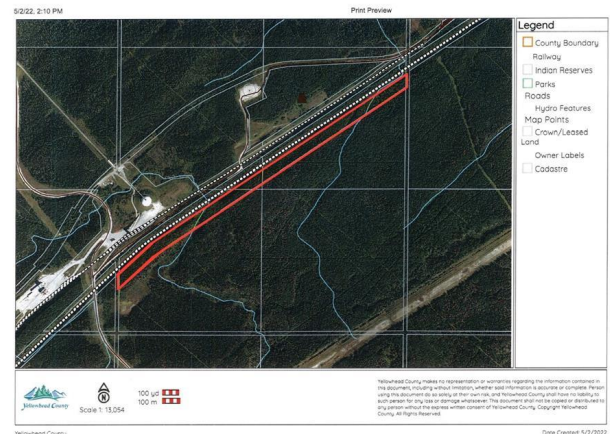
MLS® #A1212773

**\$149,900**

0 Bedroom, 0.00 Bathroom,  
Land on 29.36 Acres

NONE, Rural Yellowhead County, Alberta

Recreational property for sale in Yellowhead County. The property runs along the south side of a CN rail line. As an added bonus, the property has a creek running across it. There is no public road access to this property. The property is approximately 61 meters (200 feet) wide by 2km long



<https://map.munight.com/YellowheadRegionalContent/SitePrintMapPage.aspx?siteid=1>

1/1

## Essential Information

MLS® #	A1212773
Price	\$149,900
Bathrooms	0.00
Acres	29.36
Type	Land
Sub-Type	Residential Land
Status	Active

## Community Information

Address	5-23-52-28 Sw
Subdivision	NONE
City	Rural Yellowhead County
County	Yellowhead County
Province	Alberta
Postal Code	T7V 1A0

## Additional Information

Date Listed	May 24th, 2022
Days on Market	1048
Zoning	ND



## Listing Details

Listing Office            RE/MAX 2000 REALTY

Data is supplied by Pillar 9â,,ç MLSÂ® System. Pillar 9â,,ç is the owner of the copyright in its MLSÂ® System. Data is deemed reliable but is not guaranteed accurate by Pillar 9â,,ç. The trademarks MLSÂ®, Multiple Listing ServiceÂ® and the associated logos are owned by The Canadian Real Estate Association (CREA) and identify the quality of services provided by real estate professionals who are members of CREA. Used under license.