

\$375,000 - 11319 110 Avenue, Edmonton

MLS® #E4431260

\$375,000

2 Bedroom, 2.00 Bathroom, 940 sqft

Single Family on 0.00 Acres

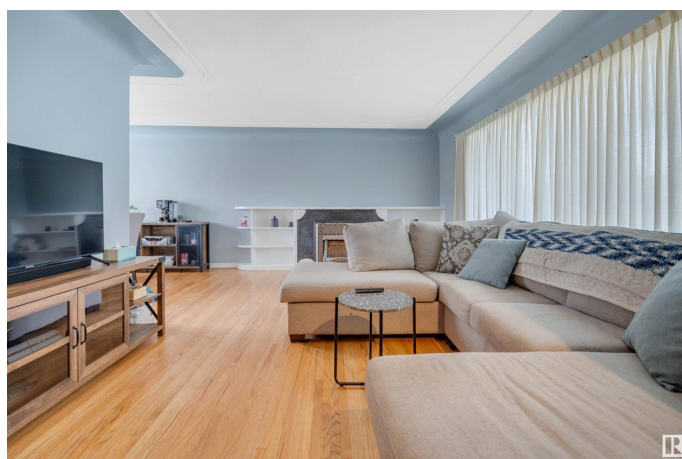
Queen Mary Park, Edmonton, AB

CLASSIC STYLE in Queen Mary Park!
TRANQUIL TONES and VIBRANT
HARDWOOD outline the COVED CEILINGS
through the Living Room, past the ACCENT
FIREPLACE, seamlessly flowing into the
FORMAL DINING SPACE with CHANDELIER.
The BRIGHT VINTAGE kitchen overlooks an
EXPANSIVE YARD with FRUIT TREES,
GREENHOUSE, and SINGLE-CAR GARAGE.
An ENORMOUS 55x144 space encompasses
this CHARMING 2-bedroom, 2-bathroom
BUNGALOW. The BACK ENTRANCE to the
basement uncovers the beginnings of a 2nd
KITCHEN and more BEDROOMS. Near a
DAYCARE and PARK; 5 minute drive to ICE
DISTRICT and NAIT; 15 minute walk to
GRANT MACEWAN and tons of SHOPPING.
Welcome to the QUIET LIFE in the HEART of
EDMONTON!

Built in 1950

Essential Information

MLS® #	E4431260
Price	\$375,000
Bedrooms	2
Bathrooms	2.00
Full Baths	2
Square Footage	940
Acres	0.00



Year Built	1950
Type	Single Family
Sub-Type	Detached Single Family
Style	Bungalow
Status	Active

Community Information

Address	11319 110 Avenue
Area	Edmonton
Subdivision	Queen Mary Park
City	Edmonton
County	ALBERTA
Province	AB
Postal Code	T5H 1J2

Amenities

Amenities	Off Street Parking, Greenhouse
Parking	Single Garage Detached

Interior

Appliances	Dryer, Freezer, Stove-Electric, Washer, Window Coverings, Refrigerators-Two
Heating	Forced Air-1, Natural Gas
Stories	2
Has Basement	Yes
Basement	Full, Finished

Exterior

Exterior	Wood, Vinyl
Exterior Features	Fenced, Landscaped, Public Transportation, Schools, Shopping Nearby
Roof	Asphalt Shingles
Construction	Wood, Vinyl
Foundation	Concrete Perimeter

Additional Information

Date Listed	April 17th, 2025
Days on Market	4
Zoning	Zone 08

DATA IS DEEMED RELIABLE BUT IS NOT GUARANTEED ACCURATE BY THE REALTORS® ASSOCIATION OF

EDMONTON. COPYRIGHT 2025 BY THE REALTORS® ASSOCIATION OF EDMONTON. ALL RIGHTS RESERVED.Trademarks are owned or controlled by the Canadian Real Estate Association (CREA) and identify real estate professionals who are members of CREA (REALTOR®, REALTORS®) and/or the quality of services they provide (MLS®, Multiple Listing Service®)

Listing information last updated on April 21st, 2025 at 5:32am MDT