

Courtesy Of Dwight Streu Of MaxWell Polaris

\$525,000 - 18 10848 8 Avenue, Edmonton

MLS® #E4429506

\$525,000

4 Bedroom, 3.00 Bathroom, 1,372 sqft
Condo / Townhouse on 0.00 Acres

Richford, Edmonton, AB

Terrific walk out bungalow in adult community(55 plus) on pie lot backing onto a green space. Close to shopping, Anthony Henday and Calgary Trail. Open concept with vaulted ceilings and kitchen open to the great room. Main floor laundry. Hardwood floors. Professionally finished basement. Huge West facing deck. Steps to Ravine and walking trails. Excellent condition! For more details please visit the REALTOR®'s Website.

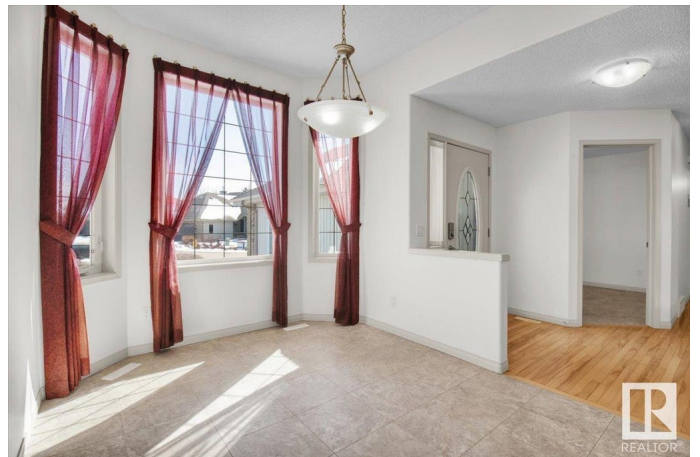
Built in 2001

Essential Information

MLS® #	E4429506
Price	\$525,000
Bedrooms	4
Bathrooms	3.00
Full Baths	3
Square Footage	1,372
Acres	0.00
Year Built	2001
Type	Condo / Townhouse
Sub-Type	Half Duplex
Style	Bungalow
Status	Active

Community Information

Address 18 10848 8 Avenue



Area	Edmonton
Subdivision	Richford
City	Edmonton
County	ALBERTA
Province	AB
Postal Code	T6W 1G5

Amenities

Amenities	Air Conditioner, Deck, Detectors Smoke, Parking-Visitor, Patio, Vaulted Ceiling, Walkout Basement
Parking Spaces	4
Parking	Double Garage Attached, Front Drive Access, Insulated
Is Waterfront	Yes

Interior

Interior Features	ensuite bathroom
Appliances	Dishwasher-Built-In, Dryer, Refrigerator, Stove-Gas, Washer
Heating	Forced Air-1, Natural Gas
Stories	2
Has Basement	Yes
Basement	Full, Finished

Exterior

Exterior	Wood, Brick, Vinyl
Exterior Features	Creek, Cul-De-Sac, Fenced, Playground Nearby, Public Transportation, Shopping Nearby
Roof	Asphalt Shingles
Construction	Wood, Brick, Vinyl
Foundation	Concrete Perimeter

School Information

Elementary	Roberta Macadams/Monsignor
Middle	D.S Mackenzie/Father Micha
High	Dr.Anne/Louis St. L

Additional Information

Date Listed	April 7th, 2025
Days on Market	14
Zoning	Zone 55

HOA Fees	220
HOA Fees Freq.	Annually
Condo Fee	\$416

DATA IS DEEMED RELIABLE BUT IS NOT GUARANTEED ACCURATE BY THE REALTORS® ASSOCIATION OF EDMONTON. COPYRIGHT 2025 BY THE REALTORS® ASSOCIATION OF EDMONTON. ALL RIGHTS RESERVED. Trademarks are owned or controlled by the Canadian Real Estate Association (CREA) and identify real estate professionals who are members of CREA (REALTOR®, REALTORS®) and/or the quality of services they provide (MLS®, Multiple Listing Service®)

Listing information last updated on April 21st, 2025 at 3:32pm MDT