

\$485,000 - 30 Davy Crescent, Sherwood Park

MLS® #E4428813

\$485,000

4 Bedroom, 3.00 Bathroom, 1,077 sqft
Single Family on 0.00 Acres

Davidson Creek, Sherwood Park, AB

This 4-level split is quite a find, With space and charm so well-designed. Four bedrooms give you room to grow, A yard so big, let gardens flow! The parkingâ€™s plenty, bring your ride, Cars, RVsâ€™just step inside. Bright and airy, filled with light, A place that feels just right at night. Cozy corners, open space, A welcoming and warm embrace. Come take a look, donâ€™t miss your chance, A home like this deserves a glance!

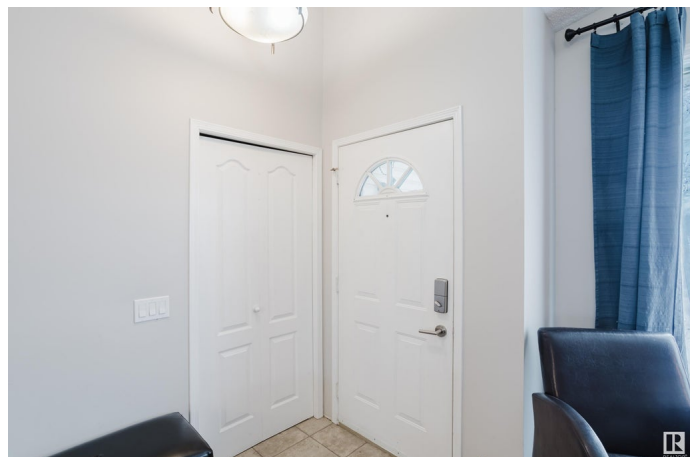
Built in 1991

Essential Information

| | |
|----------------|------------------------|
| MLS® # | E4428813 |
| Price | \$485,000 |
| Bedrooms | 4 |
| Bathrooms | 3.00 |
| Full Baths | 3 |
| Square Footage | 1,077 |
| Acres | 0.00 |
| Year Built | 1991 |
| Type | Single Family |
| Sub-Type | Detached Single Family |
| Style | 4 Level Split |
| Status | Active |

Community Information

Address 30 Davy Crescent



| | |
|-------------|----------------|
| Area | Sherwood Park |
| Subdivision | Davidson Creek |
| City | Sherwood Park |
| County | ALBERTA |
| Province | AB |
| Postal Code | T8H 1P3 |

Amenities

| | |
|----------------|--|
| Amenities | Deck, Fire Pit, Gazebo, Hot Water Natural Gas, No Smoking Home, R.V. Storage, Vaulted Ceiling, Vinyl Windows |
| Parking Spaces | 5 |
| Parking | 220 Volt Wiring, Double Garage Attached, Insulated, RV Parking |

Interior

| | |
|-------------------|---|
| Interior Features | ensuite bathroom |
| Appliances | Dishwasher-Built-In, Dryer, Garage Opener, Garburator, Hood Fan, Refrigerator, Stove-Electric, Washer |
| Heating | Forced Air-1, Natural Gas |
| Fireplace | Yes |
| Fireplaces | Mantel, Tile Surround |
| Stories | 4 |
| Has Basement | Yes |
| Basement | Full, Finished |

Exterior

| | |
|-------------------|--|
| Exterior | Wood, Vinyl |
| Exterior Features | Fenced, Low Maintenance Landscape, No Back Lane, No Through Road, Schools, Shopping Nearby |
| Roof | Asphalt Shingles |
| Construction | Wood, Vinyl |
| Foundation | Concrete Perimeter |

Additional Information

| | |
|----------------|-----------------|
| Date Listed | April 3rd, 2025 |
| Days on Market | 2 |
| Zoning | Zone 25 |

DATA IS DEEMED RELIABLE BUT IS NOT GUARANTEED ACCURATE BY THE REALTORS® ASSOCIATION OF EDMONTON. COPYRIGHT 2025 BY THE REALTORS® ASSOCIATION OF EDMONTON. ALL RIGHTS RESERVED. Trademarks are owned or controlled by the Canadian Real Estate Association (CREA) and identify real estate professionals who are members of CREA (REALTOR®, REALTORS®) and/or the quality of services they

provide (MLS® , Multiple Listing Service®)

Listing information last updated on April 4th, 2025 at 10:02pm MDT