

Courtesy Of Jay Lewis Of RE/MAX Excellence

\$410,500 - 89 Brickyard Drive, Stony Plain

MLS® #E4428450

\$410,500

3 Bedroom, 2.50 Bathroom, 1,382 sqft
Single Family on 0.00 Acres

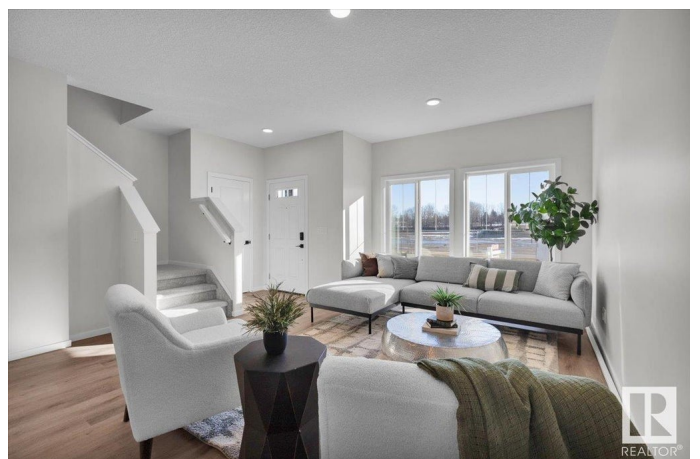
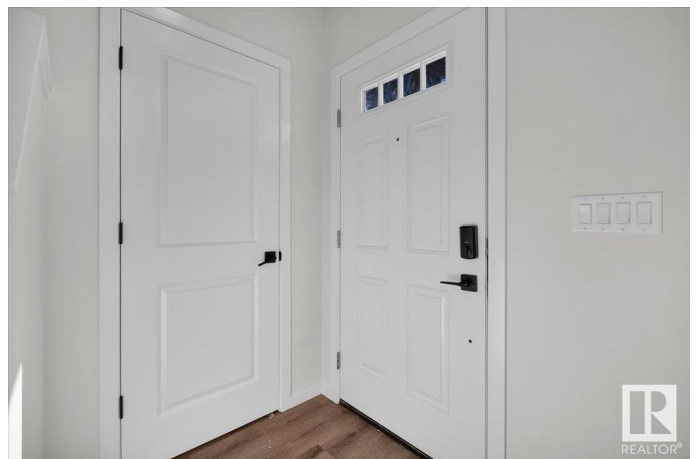
Brickyard, Stony Plain, AB

Step into this stunning, brand-new two-storey home in Stony Plain! Designed with both style and practicality in mind, this end unit attached home boasts 3 bedrooms, 2.5 bathrooms, a double detached garage, and full landscaping. The open-concept main floor is perfect for entertaining, featuring a stylish kitchen with a large breakfast bar, stainless steel appliances, quartz countertops, and sleek vinyl plank flooring throughout. A 2pc bathroom and a mudroom with built-in bench and cubbies complete the layout near the back entrance. Upstairs, you'll find a 4pc main bath, laundry area, 2 bedrooms and a spacious primary bedroom with a walk-in closet and a luxurious 4pc ensuite. Combining modern design with everyday functionality, this home is located in a highly sought-after neighbourhood. Don't miss the opportunity to view it!
Photos are representative

Built in 2025

Essential Information

MLS® #	E4428450
Price	\$410,500
Bedrooms	3
Bathrooms	2.50
Full Baths	2
Half Baths	1



Square Footage	1,382
Acres	0.00
Year Built	2025
Type	Single Family
Sub-Type	Residential Attached
Style	2 Storey
Status	Active

Community Information

Address	89 Brickyard Drive
Area	Stony Plain
Subdivision	Brickyard
City	Stony Plain
County	ALBERTA
Province	AB
Postal Code	T7Z 1C3

Amenities

Amenities	Ceiling 9 ft., Deck, No Animal Home, No Smoking Home
Parking	Double Garage Detached

Interior

Interior Features	ensuite bathroom
Appliances	Dishwasher-Built-In, Microwave Hood Fan, Refrigerator, Stove-Electric
Heating	Forced Air-1, Natural Gas
Fireplace	Yes
Fireplaces	Insert
Stories	2
Has Basement	Yes
Basement	Full, Unfinished

Exterior

Exterior	Wood, Vinyl
Exterior Features	Back Lane, Landscaped, Park/Reserve, Playground Nearby, Schools, Shopping Nearby
Roof	Asphalt Shingles
Construction	Wood, Vinyl
Foundation	Concrete Perimeter

Additional Information

Date Listed April 1st, 2025

Days on Market 4

Zoning Zone 91

DATA IS DEEMED RELIABLE BUT IS NOT GUARANTEED ACCURATE BY THE REALTORS® ASSOCIATION OF EDMONTON. COPYRIGHT 2025 BY THE REALTORS® ASSOCIATION OF EDMONTON. ALL RIGHTS RESERVED. Trademarks are owned or controlled by the Canadian Real Estate Association (CREA) and identify real estate professionals who are members of CREA (REALTOR®, REALTORS®) and/or the quality of services they provide (MLS®, Multiple Listing Service®)

Listing information last updated on April 5th, 2025 at 5:02am MDT