

\$259,000 - 204 Kingsfield Village, Leduc

MLS® #E4428357

\$259,000

3 Bedroom, 2.00 Bathroom, 1,480 sqft
Condo / Townhouse on 0.00 Acres

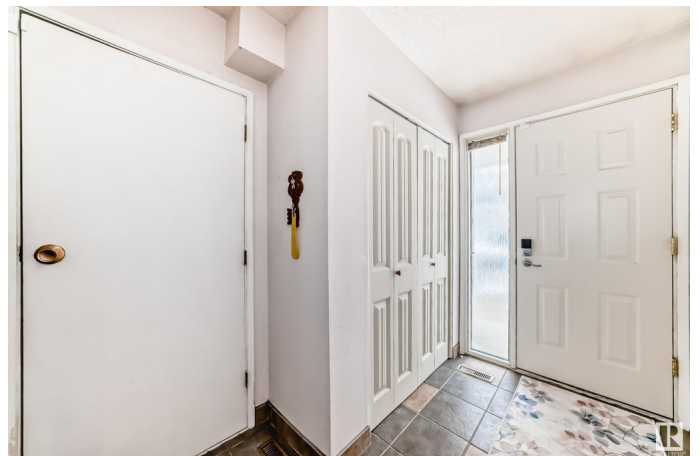
Leduc Estates, Leduc, AB

This great value townhouse in Leduc Estates with attached single garage is perfect for first-time home buyers! With low condo fees of just \$344.84 / month, including water and sewer, this 4-level split home is a perfect opportunity. The open living and dining area features a newer electric fireplace and flows seamlessly to a large deck through patio doors, leading to a chain-link fenced yard, backing a greenspace. Key updates include a furnace, hot water tank, washer, and stove—all less than five years old. Upstairs, you'll find three bedrooms, with the primary suite having a 2-piece ensuite. Location is ideal with walking distance to schools, shopping, parks and trails.

Built in 1976

Essential Information

| | |
|----------------|-----------|
| MLS® # | E4428357 |
| Price | \$259,000 |
| Bedrooms | 3 |
| Bathrooms | 2.00 |
| Full Baths | 1 |
| Half Baths | 2 |
| Square Footage | 1,480 |
| Acres | 0.00 |
| Year Built | 1976 |



| | |
|----------|-------------------|
| Type | Condo / Townhouse |
| Sub-Type | Townhouse |
| Style | 4 Level Split |
| Status | Active |

Community Information

| | |
|-------------|------------------------|
| Address | 204 Kingsfield Village |
| Area | Leduc |
| Subdivision | Leduc Estates |
| City | Leduc |
| County | ALBERTA |
| Province | AB |
| Postal Code | T9E 5K2 |

Amenities

| | |
|-----------|------------------------|
| Amenities | Deck |
| Parking | Single Garage Attached |

Interior

| | |
|-------------------|---|
| Interior Features | ensuite bathroom |
| Appliances | Dishwasher-Built-In, Dryer, Garage Control, Garage Opener, Refrigerator, Stove-Electric, Washer, Window Coverings |
| Heating | Forced Air-1, Natural Gas |
| Stories | 3 |
| Has Basement | Yes |
| Basement | Partial, Partially Finished |

Exterior

| | |
|-------------------|--|
| Exterior | Wood, Vinyl |
| Exterior Features | Airport Nearby, Fenced, Golf Nearby, Landscaped, Playground Nearby, Schools, Shopping Nearby |
| Roof | Asphalt Shingles |
| Construction | Wood, Vinyl |
| Foundation | Concrete Perimeter |

Additional Information

| | |
|----------------|-----------------|
| Date Listed | April 1st, 2025 |
| Days on Market | 4 |
| Zoning | Zone 81 |

Condo Fee \$345

DATA IS DEEMED RELIABLE BUT IS NOT GUARANTEED ACCURATE BY THE REALTORS® ASSOCIATION OF EDMONTON. COPYRIGHT 2025 BY THE REALTORS® ASSOCIATION OF EDMONTON. ALL RIGHTS RESERVED. Trademarks are owned or controlled by the Canadian Real Estate Association (CREA) and identify real estate professionals who are members of CREA (REALTOR®, REALTORS®) and/or the quality of services they provide (MLS®, Multiple Listing Service®)

Listing information last updated on April 4th, 2025 at 11:32pm MDT