

Courtesy Of Yad Dhillon Of Nationwide Realty Corp

# \$599,900 - 1908 155 Avenue, Edmonton

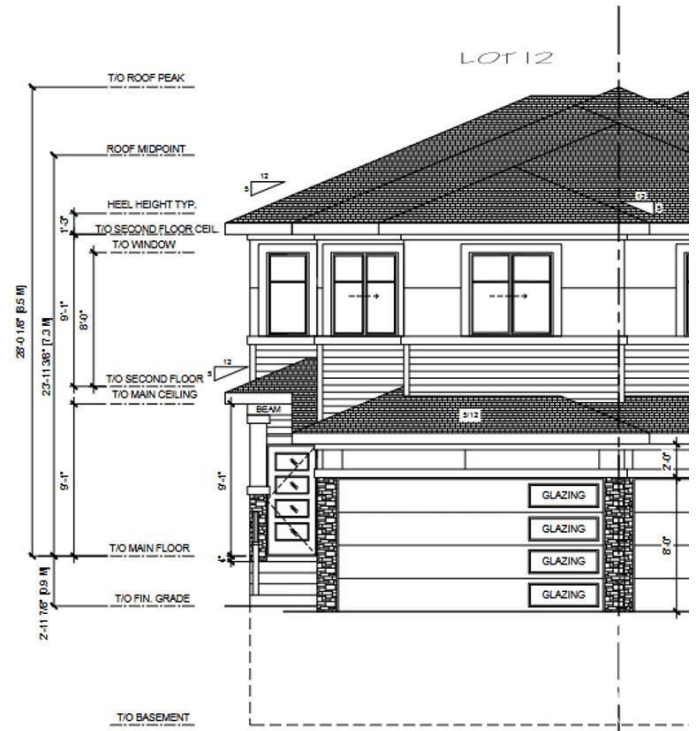
MLS® #E4427888

**\$599,900**

5 Bedroom, 4.00 Bathroom, 1,812 sqft  
Single Family on 0.00 Acres

Gorman, Edmonton, AB

**\*\*MAIN FLOOR DEN\*\*2 BED LEGAL BASEMENT SUITE** \*\*Welcome to this stunning half duplex in the heart of Gorman, North Edmonton! With a finished legal basement suite, this home offers endless possibilities for extra income or comfortable multi-generational living. The main floor boasts a bright and airy open-to-below concept, a spacious living room, a dining area, and a convenient side entry to the basement. You'll also find a versatile den with a 3-piece ensuite bathroom and a practical spice kitchen for all your culinary adventures. Upstairs, relax in the serene primary suite featuring a luxurious 5-piece ensuite and walk-in closet.two additional bedrooms, a stylish 3-piece bathroom, and a laundry room complete this level. The legal basement suite comes with two bedrooms, its own kitchen, living space, laundry, and private entrance. Located just moments from shopping plazas and schools, this home blends comfort, convenience, and modern elegance. \*\*House under Construction\*\*approx ready within 3-4 months\*\*



Built in 2025

## Essential Information

MLS® #                   E4427888  
Price                     \$599,900

Bedrooms	5
Bathrooms	4.00
Full Baths	4
Square Footage	1,812
Acres	0.00
Year Built	2025
Type	Single Family
Sub-Type	Half Duplex
Style	2 Storey
Status	Active

### **Community Information**

Address	1908 155 Avenue
Area	Edmonton
Subdivision	Gorman
City	Edmonton
County	ALBERTA
Province	AB
Postal Code	T5Y 4H8

### **Amenities**

Amenities	Carbon Monoxide Detectors, Detectors Smoke
Parking	Double Garage Attached

### **Interior**

Interior Features	ensuite bathroom
Appliances	See Remarks
Heating	Forced Air-1, Natural Gas
Fireplace	Yes
Fireplaces	None
Stories	3
Has Basement	Yes
Basement	Full, Finished

### **Exterior**

Exterior	Wood, Stone, Vinyl
Exterior Features	Commercial, Golf Nearby, Public Transportation, Schools, Shopping Nearby, View City
Roof	Asphalt Shingles

Construction Wood, Stone, Vinyl  
Foundation Concrete Perimeter

### **Additional Information**

Date Listed March 28th, 2025  
Days on Market 8  
Zoning Zone 03

DATA IS DEEMED RELIABLE BUT IS NOT GUARANTEED ACCURATE BY THE REALTORS® ASSOCIATION OF EDMONTON. COPYRIGHT 2025 BY THE REALTORS® ASSOCIATION OF EDMONTON. ALL RIGHTS RESERVED. Trademarks are owned or controlled by the Canadian Real Estate Association (CREA) and identify real estate professionals who are members of CREA (REALTOR®, REALTORS®) and/or the quality of services they provide (MLS®, Multiple Listing Service®)

Listing information last updated on April 5th, 2025 at 12:47am MDT