

\$599,900 - 8516 6 Avenue, Edmonton

MLS® #E4427513

\$599,900

4 Bedroom, 3.50 Bathroom, 2,079 sqft
Single Family on 0.00 Acres

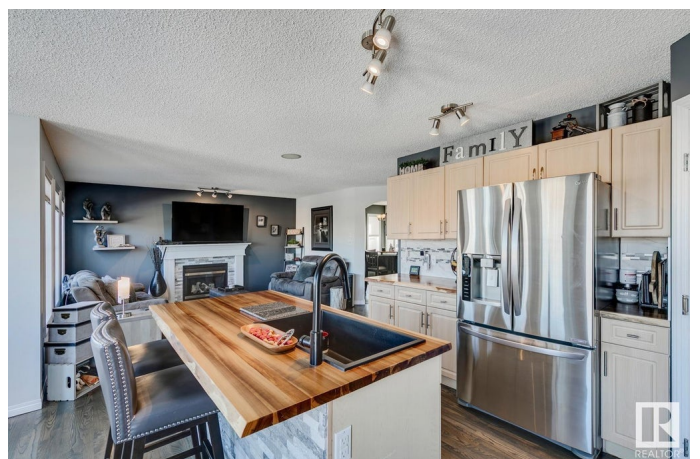
Ellerslie, Edmonton, AB

Absolutely gorgeous home in desirable Ellerslie! This nicely updated 2-storey offers over 2800 sqft of total living space and sits upon a beautiful lot backing directly onto a pond/park. The main floor welcomes you with a bright and spacious floorplan, gleaming refinished hardwood flooring, beautiful kitchen w/butcher block counters and new s.s. appliances, open living area w/tile surround gas fireplace, and great dining space w/tiled flooring. The upper level features the primary suite w/4-pc ensuite, walk-in closet, and raised nook area. Additional 2 bedrooms, 4-pc bath, and large bonus room w/vaulted ceilings. The FULLY FINISHED lower level features a large rec area, 4th bedroom, 3-pc bath, and loads of storage space. Outside you will enjoy beautiful views of the pond/park, composite deck, and firepit area. Recent improvements include: roof, flooring, furnace, HWT, paint, and more. Close to great schools, shopping, and other amenities. This is a fantastic family home in an even better location!

Built in 2003

Essential Information

| | |
|----------|-----------|
| MLS® # | E4427513 |
| Price | \$599,900 |
| Bedrooms | 4 |



| | |
|----------------|------------------------|
| Bathrooms | 3.50 |
| Full Baths | 3 |
| Half Baths | 1 |
| Square Footage | 2,079 |
| Acres | 0.00 |
| Year Built | 2003 |
| Type | Single Family |
| Sub-Type | Detached Single Family |
| Style | 2 Storey |
| Status | Active |

Community Information

| | |
|-------------|---------------|
| Address | 8516 6 Avenue |
| Area | Edmonton |
| Subdivision | Ellerslie |
| City | Edmonton |
| County | ALBERTA |
| Province | AB |
| Postal Code | T6X 1J1 |

Amenities

| | |
|-----------|--|
| Amenities | Deck, No Smoking Home, Vaulted Ceiling |
| Parking | Double Garage Attached |

Interior

| | |
|-------------------|--|
| Interior Features | ensuite bathroom |
| Appliances | Dishwasher-Built-In, Garage Opener, Hood Fan, Oven-Microwave, Refrigerator, Stove-Gas, Vacuum System Attachments, Vacuum Systems, Window Coverings |
| Heating | Forced Air-1, Natural Gas |
| Fireplace | Yes |
| Fireplaces | Mantel, Tile Surround |
| Stories | 3 |
| Has Basement | Yes |
| Basement | Full, Finished |

Exterior

| | |
|-------------------|--|
| Exterior | Wood, Vinyl |
| Exterior Features | Airport Nearby, Backs Onto Lake, Fenced, Flat Site, Golf Nearby, |

Landscaped, Playground Nearby, Public Transportation, Schools, Shopping Nearby

Roof Asphalt Shingles
Construction Wood, Vinyl
Foundation Concrete Perimeter

School Information

Elementary Sakaw
Middle Kisewatsiwin
High J Percy Page

Additional Information

Date Listed March 25th, 2025
Days on Market 11
Zoning Zone 53

DATA IS DEEMED RELIABLE BUT IS NOT GUARANTEED ACCURATE BY THE REALTORS® ASSOCIATION OF EDMONTON. COPYRIGHT 2025 BY THE REALTORS® ASSOCIATION OF EDMONTON. ALL RIGHTS RESERVED. Trademarks are owned or controlled by the Canadian Real Estate Association (CREA) and identify real estate professionals who are members of CREA (REALTOR®, REALTORS®) and/or the quality of services they provide (MLS®, Multiple Listing Service®)

Listing information last updated on April 5th, 2025 at 3:47am MDT