

Courtesy Of Karra Kraychy Of RE/MAX Excellence

\$560,000 - 1701 9020 Jasper Avenue, Edmonton

MLS® #E4427188

\$560,000

3 Bedroom, 2.50 Bathroom, 2,564 sqft
Condo / Townhouse on 0.00 Acres

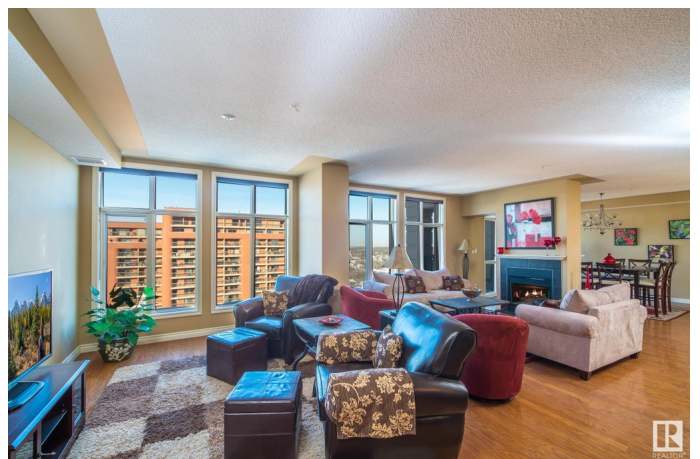
Boyle Street, Edmonton, AB

Welcome to this massive 17th-floor condo, offering over 2,500 square feet of luxury living space! This spacious condo features 3 generously sized bedrooms, 3 bathrooms, and an office/den. The primary suite features a 5-piece ensuite, a fireplace, and a private balcony. The open-concept living area is designed for both comfort and elegance, with a dual-sided fireplace that separates the living and dining area, hardwood floors and a second balcony with panoramic views of the city and river. The chef's kitchen showcases a massive island with granite countertops, a walk-in pantry and ample cabinetry for all your culinary needs. This unit comes with 2 underground parking stalls. Residents enjoy a gated entrance, a fitness room, social room and security monitoring. Plus, all utilities are included in the condo fees. No need to sacrifice space for the perks of easy, stress-free condo living! Perfectly located close to hospitals, transit, and the beautiful river valley!

Built in 2005

Essential Information

MLS® #	E4427188
Price	\$560,000
Bedrooms	3



Bathrooms	2.50
Full Baths	2
Half Baths	1
Square Footage	2,564
Acres	0.00
Year Built	2005
Type	Condo / Townhouse
Sub-Type	Apartment High Rise
Style	Single Level Apartment
Status	Active

Community Information

Address	1701 9020 Jasper Avenue
Area	Edmonton
Subdivision	Boyle Street
City	Edmonton
County	ALBERTA
Province	AB
Postal Code	T5H 2S8

Amenities

Amenities	Air Conditioner, Exercise Room, No Smoking Home, Parking-Visitor, Secured Parking, Security Door, Storage-In-Suite, Natural Gas BBQ Hookup
Parking Spaces	2
Parking	Heated, Underground

Interior

Interior Features	ensuite bathroom
Appliances	Compactor, Dishwasher-Built-In, Dryer, Garburator, Microwave Hood Fan, Refrigerator, Stove-Electric, Vacuum Systems, Washer
Heating	Forced Air-2, Natural Gas
Fireplace	Yes
Fireplaces	Double Sided, Mantel
# of Stories	22
Stories	1
Has Basement	Yes
Basement	None, No Basement

Exterior

Exterior	Concrete, Brick, Stucco
Exterior Features	Fenced, Gated Community, Golf Nearby, Playground Nearby, Public Transportation, River Valley View, River View, Shopping Nearby, Ski Hill Nearby, View City
Roof	Metal
Construction	Concrete, Brick, Stucco
Foundation	Concrete Perimeter

Additional Information

Date Listed	March 24th, 2025
Days on Market	19
Zoning	Zone 13
Condo Fee	\$1,873

DATA IS DEEMED RELIABLE BUT IS NOT GUARANTEED ACCURATE BY THE REALTORS® ASSOCIATION OF EDMONTON. COPYRIGHT 2025 BY THE REALTORS® ASSOCIATION OF EDMONTON. ALL RIGHTS RESERVED. Trademarks are owned or controlled by the Canadian Real Estate Association (CREA) and identify real estate professionals who are members of CREA (REALTOR®, REALTORS®) and/or the quality of services they provide (MLS®, Multiple Listing Service®)

Listing information last updated on April 12th, 2025 at 10:32am MDT