

\$179,900 - 202 10125 83 Avenue, Edmonton

MLS® #E4425093

\$179,900

2 Bedroom, 1.00 Bathroom, 784 sqft

Condo / Townhouse on 0.00 Acres

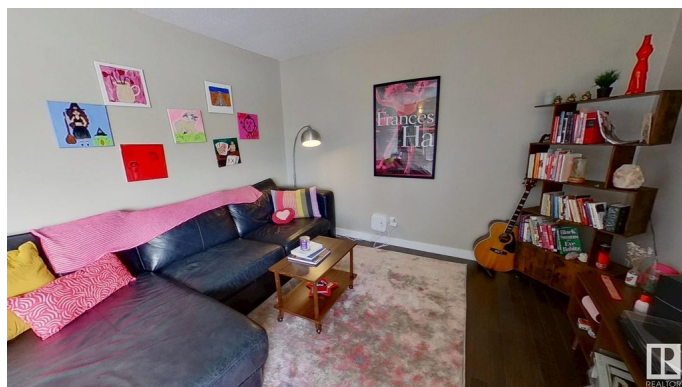
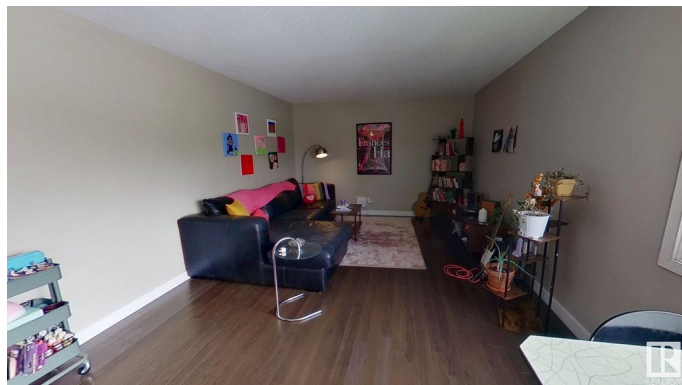
Strathcona, Edmonton, AB

Charming 2-Bedroom Condo – Prime Location Near U of A & Whyte Ave! This bright and inviting 2-bedroom unit is ideally situated just blocks from the University of Alberta, Whyte Avenue, the scenic river valley, and offers a quick commute to downtown Edmonton! Enjoy ample natural light, modern laminate flooring, and plenty of storage in this well-designed space. The kitchen and bathroom have been upgraded with a stylish tile backsplash and sleek stainless steel appliances, including a dishwasher. Plus, the covered carport adds extra convenience and protection for your vehicle. Nestled in the back of the building for added privacy, this unit offers a quiet retreat while still being steps away from shopping, schools, restaurants, and public transportation. Laundry facilities are conveniently located within the building, making daily routines a breeze.

Built in 1969

Essential Information

| | |
|----------------|-----------|
| MLS® # | E4425093 |
| Price | \$179,900 |
| Bedrooms | 2 |
| Bathrooms | 1.00 |
| Full Baths | 1 |
| Square Footage | 784 |



| | |
|------------|------------------------|
| Acres | 0.00 |
| Year Built | 1969 |
| Type | Condo / Townhouse |
| Sub-Type | Lowrise Apartment |
| Style | Single Level Apartment |
| Status | Active |

Community Information

| | |
|-------------|---------------------|
| Address | 202 10125 83 Avenue |
| Area | Edmonton |
| Subdivision | Strathcona |
| City | Edmonton |
| County | ALBERTA |
| Province | AB |
| Postal Code | T6E 2C5 |

Amenities

| | |
|-----------|--|
| Amenities | Intercom, No Smoking Home, Parking-Plug-Ins, Parking-Visitor |
| Parking | Single Carport |

Interior

| | |
|--------------|---|
| Appliances | Dishwasher-Built-In, Intercom, Microwave Hood Fan, Refrigerator, Stove-Electric, Window Coverings |
| Heating | Baseboard, Water |
| # of Stories | 1 |
| Stories | 1 |
| Has Basement | Yes |
| Basement | Full, Finished |

Exterior

| | |
|-------------------|--|
| Exterior | Wood, Brick, Vinyl |
| Exterior Features | Landscaped, Playground Nearby, Public Transportation, Schools, Shopping Nearby |
| Roof | Tar & Gravel |
| Construction | Wood, Brick, Vinyl |
| Foundation | Concrete Perimeter |

Additional Information

| | |
|-------------|------------------|
| Date Listed | March 11th, 2025 |
|-------------|------------------|

| | |
|----------------|---------|
| Days on Market | 41 |
| Zoning | Zone 15 |
| Condo Fee | \$619 |

DATA IS DEEMED RELIABLE BUT IS NOT GUARANTEED ACCURATE BY THE REALTORS® ASSOCIATION OF EDMONTON. COPYRIGHT 2025 BY THE REALTORS® ASSOCIATION OF EDMONTON. ALL RIGHTS RESERVED. Trademarks are owned or controlled by the Canadian Real Estate Association (CREA) and identify real estate professionals who are members of CREA (REALTOR®, REALTORS®) and/or the quality of services they provide (MLS®, Multiple Listing Service®)

Listing information last updated on April 21st, 2025 at 12:17am MDT