

Courtesy Of Sam Killick and Jakie K Ng Of ARIVL

\$209,000 - 204 11710 100 Avenue, Edmonton

MLS® #E4424044

\$209,000

2 Bedroom, 1.5 Bathroom, 1,436 sqft
Condo / Townhouse on 0.00 Acres

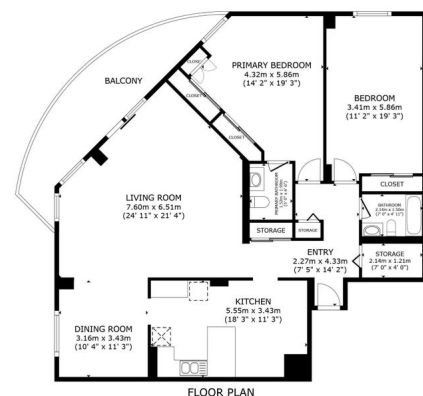
Wá@hkwáantÁwin, Edmonton, AB

1436 SQFT, 2 BEDS, 1.5 BATHS – ALL UTILITIES INCLUDED, UNDERGROUND PARKING & LAUNDRY HOOKUPS! Welcome to Unit #204 in Victoria Plaza, in the heart of WáŹHKWáŠNá”WáŹN (formerly Oliver), a spacious 1436 SQFT home on Victoria Promenade, just steps from River Valley trails, bike paths, Royal Glenora Club, and Victoria Golf Course. This bright, airy unit features oversized windows that flood the living and dining areas with natural light. Move-in ready for those who love a retro aesthetic, or renovate to create your modern dream home! Victoria Plaza is a well-maintained concrete building offering resort-style amenities, including a recently updated pool, hot tub, sauna, fitness centre, social room, and onsite caretaker. Added conveniences include 1 underground parking stall, in-suite laundry hookups, and all utilities included in condo fees for a hassle-free lifestyle. Minutes from Downtown – city convenience meets nature at your doorstep. The best of both worlds!

Built in 1973

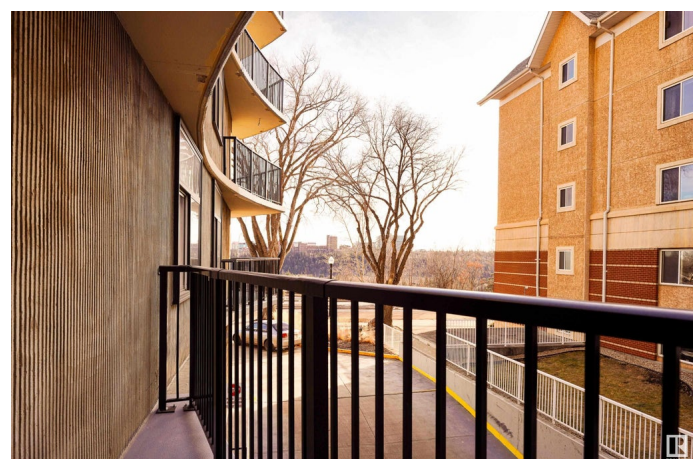
Essential Information

MLS® #	E4424044
Price	\$209,000
Bedrooms	2



204 - 11710 100 AVENUE
VICTORIA PLAZA
WáHKWÉNÓWáN, EDMONTON

GROSS INTERNAL AREA
FLOOR PLAN 133.4 SQM (1,436 SQ FT.)
EXCLUDED AREAS: BALCONY 16.3 SQM (174 SQ FT.)
TOTAL: 133.4 SQM (1,436 SQ FT.)
SIZES AND DIMENSIONS ARE APPROXIMATE, ACTUAL MAY VARY



Bathrooms	1.50
Full Baths	1
Half Baths	1
Square Footage	1,436
Acres	0.00
Year Built	1973
Type	Condo / Townhouse
Sub-Type	Apartment High Rise
Style	Single Level Apartment
Status	Active

Community Information

Address	204 11710 100 Avenue
Area	Edmonton
Subdivision	WÃ©hkwÃ©ntÃ©win
City	Edmonton
County	ALBERTA
Province	AB
Postal Code	T5K 2G3

Amenities

Amenities	Air Conditioner, Detectors Smoke, Exercise Room, Hot Tub, Intercom, Parking-Visitor, Pool-Indoor, Sauna; Swirlpool; Steam, Secured Parking, Social Rooms, Storage-Locker Room, Vinyl Windows
Parking Spaces	1
Parking	Heated, Underground
Has Pool	Yes

Interior

Interior Features	ensuite bathroom
Appliances	Air Conditioning-Central, Dishwasher-Built-In, Hood Fan, Refrigerator, Stove-Electric, Window Coverings
Heating	Hot Water, Natural Gas
# of Stories	18
Stories	1
Has Basement	Yes
Basement	None, No Basement

Exterior

Exterior	Concrete, Composition
Exterior Features	Golf Nearby, Low Maintenance Landscape, Public Transportation, River Valley View, Shopping Nearby, View City, See Remarks
Roof	Tar & Gravel
Construction	Concrete, Composition
Foundation	Concrete Perimeter

School Information

Elementary	W&hkw&ant&win
Middle	Westminster
High	Victoria

Additional Information

Date Listed	March 5th, 2025
Days on Market	31
Zoning	Zone 12
Condo Fee	\$1,087

DATA IS DEEMED RELIABLE BUT IS NOT GUARANTEED ACCURATE BY THE REALTORS® ASSOCIATION OF EDMONTON. COPYRIGHT 2025 BY THE REALTORS® ASSOCIATION OF EDMONTON. ALL RIGHTS RESERVED. Trademarks are owned or controlled by the Canadian Real Estate Association (CREA) and identify real estate professionals who are members of CREA (REALTOR®, REALTORS®) and/or the quality of services they provide (MLS®, Multiple Listing Service®)

Listing information last updated on April 5th, 2025 at 8:17pm MDT