

# \$169,000 - 126 11325 83 Street, Edmonton

MLS® #E4421927

## \$169,000

2 Bedroom, 2.00 Bathroom, 888 sqft  
Condo / Townhouse on 0.00 Acres

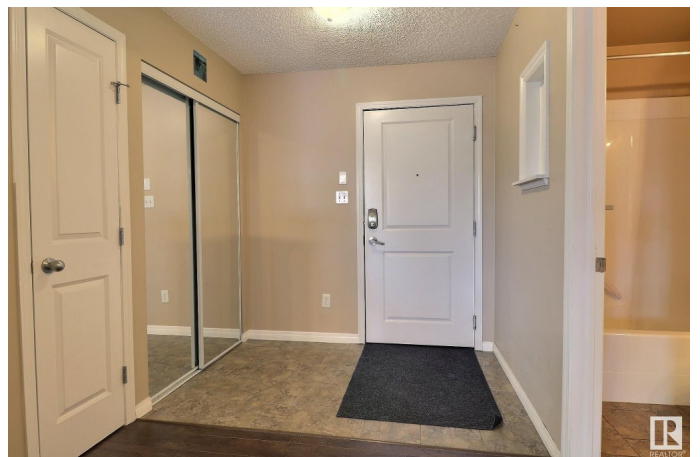
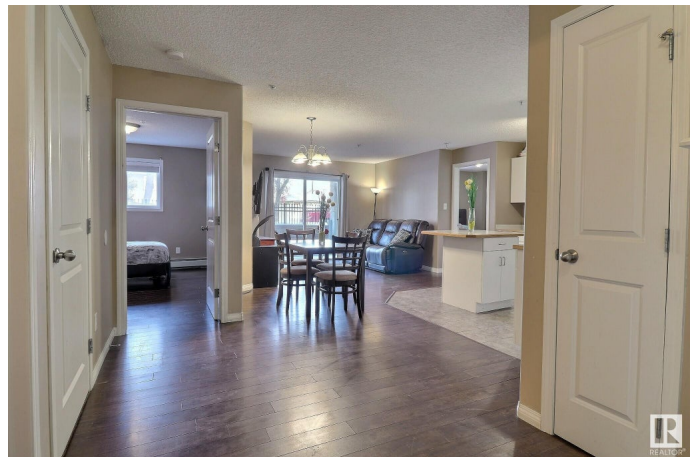
Parkdale (Edmonton), Edmonton, AB

This spacious 2-bedroom, 2-bathroom apartment is conveniently situated just steps away from the LRT, Stadium, Commonwealth Recreation Centre and other essential amenities making it an ideal location for people who transit often. This unit has an open-concept living area and large spacious bedrooms with plenty of storage. The main bedroom is an ensuite with a walk in closet, a big window with lots of natural light. This ground level unit has a patio that faces north making this an ideal unit for someone who prefers a cooler environment. This unit has in-suite laundry with a brand new washer & dryer and is move-in ready, it has the option to come fully furnished! With 2 bed sets, a dining set and a living room set that includes the TV and an electric reclining sofa, this unit could also be used as-is as an investment rental.

Built in 2004

### Essential Information

MLS® #	E4421927
Price	\$169,000
Bedrooms	2
Bathrooms	2.00
Full Baths	2
Square Footage	888
Acres	0.00



Year Built	2004
Type	Condo / Townhouse
Sub-Type	Lowrise Apartment
Style	Single Level Apartment
Status	Active

### **Community Information**

Address	126 11325 83 Street
Area	Edmonton
Subdivision	Parkdale (Edmonton)
City	Edmonton
County	ALBERTA
Province	AB
Postal Code	T5B 4W5

### **Amenities**

Amenities	Off Street Parking, No Animal Home, No Smoking Home
Parking Spaces	1
Parking	Stall

### **Interior**

Interior Features	ensuite bathroom
Appliances	Dishwasher-Built-In, Oven-Microwave, Refrigerator, Stacked Washer/Dryer, Stove-Electric, Window Coverings, TV Wall Mount
Heating	Baseboard, Hot Water, Natural Gas
# of Stories	5
Stories	5
Has Basement	Yes
Basement	None, No Basement

### **Exterior**

Exterior	Wood, Stucco
Exterior Features	Golf Nearby, Playground Nearby, Public Swimming Pool, Public Transportation, Schools, Shopping Nearby
Roof	Asphalt Shingles
Construction	Wood, Stucco
Foundation	Concrete Perimeter

### **Additional Information**

Date Listed	February 18th, 2025
Days on Market	47
Zoning	Zone 05
Condo Fee	\$511

DATA IS DEEMED RELIABLE BUT IS NOT GUARANTEED ACCURATE BY THE REALTORS® ASSOCIATION OF EDMONTON. COPYRIGHT 2025 BY THE REALTORS® ASSOCIATION OF EDMONTON. ALL RIGHTS RESERVED. Trademarks are owned or controlled by the Canadian Real Estate Association (CREA) and identify real estate professionals who are members of CREA (REALTOR®, REALTORS®) and/or the quality of services they provide (MLS®, Multiple Listing Service®)

Listing information last updated on April 6th, 2025 at 3:02pm MDT