

Courtesy Of Mohamed Salem Of Exp Realty

\$549,900 - 12907 155 Avenue, Edmonton

MLS® #E4420655

\$549,900

5 Bedroom, 3.00 Bathroom, 1,281 sqft
Single Family on 0.00 Acres

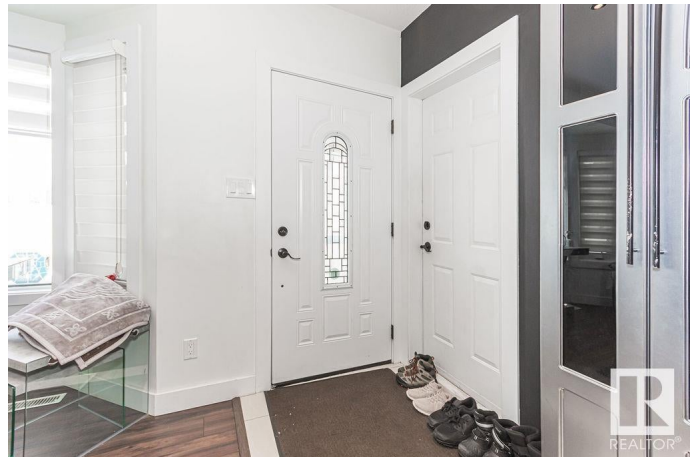
Oxford, Edmonton, AB

Welcome to this stunning home in the family-friendly Oxford community of North Edmonton corner lot across from Oxford Park with over 2200 sqft of living space! This 4+1-bedroom, 3-full-bathroom home was completely renovated inside and out in 2019, featuring a modern kitchen with sleek countertops, stainless steel appliances, and a cozy breakfast nook. New stucco and shingles. Freshly painted and equipped with a brand-new HVAC and AC system (2024) and a 4-year-old 50-gallon hot water tank, this home is move-in ready. Bright, spacious living areas are complemented by large windows, while the fully finished basement offers extra space for a home office, gym, or recreation room. Step outside to a private backyard with a deck and a beautiful grapevine, perfect for relaxing and entertaining. Located near top-rated schools, parks, and shopping centers, this home combines comfort and convenience.

Built in 1990

Essential Information

MLS® #	E4420655
Price	\$549,900
Bedrooms	5
Bathrooms	3.00
Full Baths	3



Square Footage	1,281
Acres	0.00
Year Built	1990
Type	Single Family
Sub-Type	Detached Single Family
Style	4 Level Split
Status	Active

Community Information

Address	12907 155 Avenue
Area	Edmonton
Subdivision	Oxford
City	Edmonton
County	ALBERTA
Province	AB
Postal Code	T6V 1B6

Amenities

Amenities	Air Conditioner, Deck, No Animal Home, No Smoking Home, Skylight, Vinyl Windows
Parking	Double Garage Attached

Interior

Interior Features	ensuite bathroom
Appliances	Air Conditioning-Central, Dishwasher-Built-In, Dryer, Garage Control, Garage Opener, Microwave Hood Fan, Refrigerator, Stove-Electric, Washer, Window Coverings
Heating	Forced Air-1, Natural Gas
Stories	4
Has Basement	Yes
Basement	Full, Finished

Exterior

Exterior	Wood, Stucco
Exterior Features	Corner Lot, Landscaped, Park/Reserve, Playground Nearby, Public Transportation, Schools, Shopping Nearby
Roof	Asphalt Shingles
Construction	Wood, Stucco
Foundation	Concrete Perimeter

Additional Information

Date Listed February 6th, 2025

Days on Market 58

Zoning Zone 27

DATA IS DEEMED RELIABLE BUT IS NOT GUARANTEED ACCURATE BY THE REALTORS® ASSOCIATION OF EDMONTON. COPYRIGHT 2025 BY THE REALTORS® ASSOCIATION OF EDMONTON. ALL RIGHTS RESERVED. Trademarks are owned or controlled by the Canadian Real Estate Association (CREA) and identify real estate professionals who are members of CREA (REALTOR®, REALTORS®) and/or the quality of services they provide (MLS®, Multiple Listing Service®)

Listing information last updated on April 5th, 2025 at 3:02pm MDT