

\$569,998 - 25 Ashbury Crescent, Spruce Grove

MLS® #E4420601

\$569,998

4 Bedroom, 3.00 Bathroom, 2,251 sqft

Single Family on 0.00 Acres

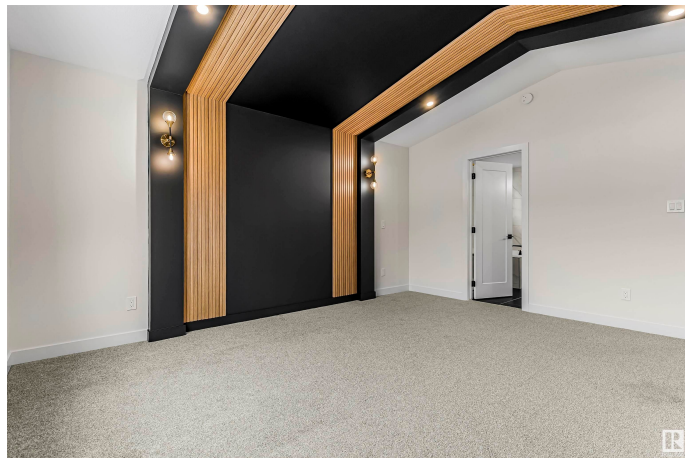
Jesperdale, Spruce Grove, AB

Brand New Double Garage Detached Home in Spruce Grove. All Appliances included. Main floor living area with open to above & STUNNING feature wall design with fireplace. Extended Kitchen with ample of cabinets and Center Island. Dining Area combined with living & access to backyard. Main floor bedroom. Main floor full bathroom. Upper level with Bonus area. Primary bedroom with beautiful ceiling design, feature wall, 5 pc ensuite & Walk In Closet. 2 additional bedrooms on upper floor with common bathroom. laundry on 2nd floor for convenience. Unfinished basement waiting for your personal finishes.

Built in 2024

Essential Information

MLS® #	E4420601
Price	\$569,998
Bedrooms	4
Bathrooms	3.00
Full Baths	3
Square Footage	2,251
Acres	0.00
Year Built	2024
Type	Single Family
Sub-Type	Detached Single Family



Style 2 Storey
Status Active

Community Information

Address 25 Ashbury Crescent
Area Spruce Grove
Subdivision Jesperdale
City Spruce Grove
County ALBERTA
Province AB
Postal Code T7X 3C6

Amenities

Amenities Ceiling 9 ft.
Parking Double Garage Attached

Interior

Interior Features ensuite bathroom
Appliances Dishwasher-Built-In, Dryer, Oven-Built-In, Refrigerator, Stove-Electric, Washer
Heating Forced Air-1, Natural Gas
Stories 2
Has Basement Yes
Basement Full, Unfinished

Exterior

Exterior Wood, Vinyl
Exterior Features Commercial, Playground Nearby, Schools, Shopping Nearby
Roof Asphalt Shingles
Construction Wood, Vinyl
Foundation Concrete Perimeter

Additional Information

Date Listed February 6th, 2025
Days on Market 59
Zoning Zone 91

DATA IS DEEMED RELIABLE BUT IS NOT GUARANTEED ACCURATE BY THE REALTORS® ASSOCIATION OF EDMONTON. COPYRIGHT 2025 BY THE REALTORS® ASSOCIATION OF EDMONTON. ALL RIGHTS RESERVED. Trademarks are owned or controlled by the Canadian Real Estate Association (CREA) and identify real estate professionals who are members of CREA (REALTOR®, REALTORS®) and/or the quality of services they

provide (MLS® , Multiple Listing Service®)

Listing information last updated on April 6th, 2025 at 7:02pm MDT