

\$960,000 - 1318 Hainstock Way, Edmonton

MLS® #E4417214

\$960,000

3 Bedroom, 2.50 Bathroom, 1,890 sqft
Single Family on 0.00 Acres

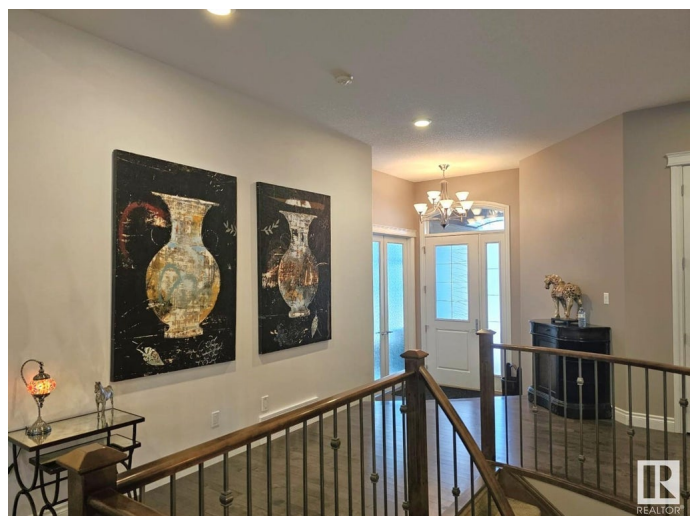
Hays Ridge Area, Edmonton, AB

This beautiful executive styled BUNGALOW is located in the highly sought after community of Jagare Ridge! Upon entering the home you'll be impressed with the 14' ceilings that carry into the great room, w/ a gas fireplace serving as the focal point. The chef's kitchen features Wolf stainless steel appliances, including a built-in oven, induction stove cooktop, massive island, and walk-thru pantry. The dining area gives way to a large west facing deck great for entertaining, which overlooks a fenced backyard. A den/office w/ great windows for daylight is located upstairs too. The primary bedroom has a large walk-in-closet w/ and an elegant 5 piece ensuite. The grand curved staircase brings you down to the fully developed basement which features a large and functional wet bar and recreation room complete w/ a wood burning fireplace capable of heating the entire home! The 2nd & 3rd bedrooms are located downstairs as is a flex room and a 4 piece bath. Close to several ponds, trails, and Jagare Ridge Golf Club!

Built in 2016

Essential Information

MLS® #	E4417214
Price	\$960,000
Bedrooms	3



Bathrooms	2.50
Full Baths	2
Half Baths	1
Square Footage	1,890
Acres	0.00
Year Built	2016
Type	Single Family
Sub-Type	Detached Single Family
Style	Bungalow
Status	Active

Community Information

Address	1318 Hainstock Way
Area	Edmonton
Subdivision	Hays Ridge Area
City	Edmonton
County	ALBERTA
Province	AB
Postal Code	T6W 3B6

Amenities

Amenities	Wet Bar
Parking	Double Garage Attached

Interior

Interior Features	ensuite bathroom
Appliances	Air Conditioning-Central, Alarm/Security System, Dishwasher-Built-In, Dryer, Garage Control, Garage Opener, Oven-Built-In, Refrigerator, Stove-Electric, Vacuum System Attachments, Vacuum Systems, Washer, Window Coverings
Heating	Forced Air-1, Natural Gas
Stories	2
Has Basement	Yes
Basement	Full, Finished

Exterior

Exterior	Wood, Stone, Stucco
Exterior Features	Fenced
Roof	Asphalt Shingles

Construction Wood, Stone, Stucco
Foundation Concrete Perimeter

Additional Information

Date Listed January 7th, 2025
Days on Market 88
Zoning Zone 55
HOA Fees 380
HOA Fees Freq. Annually

DATA IS DEEMED RELIABLE BUT IS NOT GUARANTEED ACCURATE BY THE REALTORS® ASSOCIATION OF EDMONTON. COPYRIGHT 2025 BY THE REALTORS® ASSOCIATION OF EDMONTON. ALL RIGHTS RESERVED. Trademarks are owned or controlled by the Canadian Real Estate Association (CREA) and identify real estate professionals who are members of CREA (REALTOR®, REALTORS®) and/or the quality of services they provide (MLS®, Multiple Listing Service®)

Listing information last updated on April 5th, 2025 at 7:32am MDT