

## \$2,900,000 - 430 71 Street, Edmonton

MLS® #E4411363

### \$2,900,000

3 Bedroom, 1.50 Bathroom, 1,188 sqft  
Single Family on 2.48 Acres

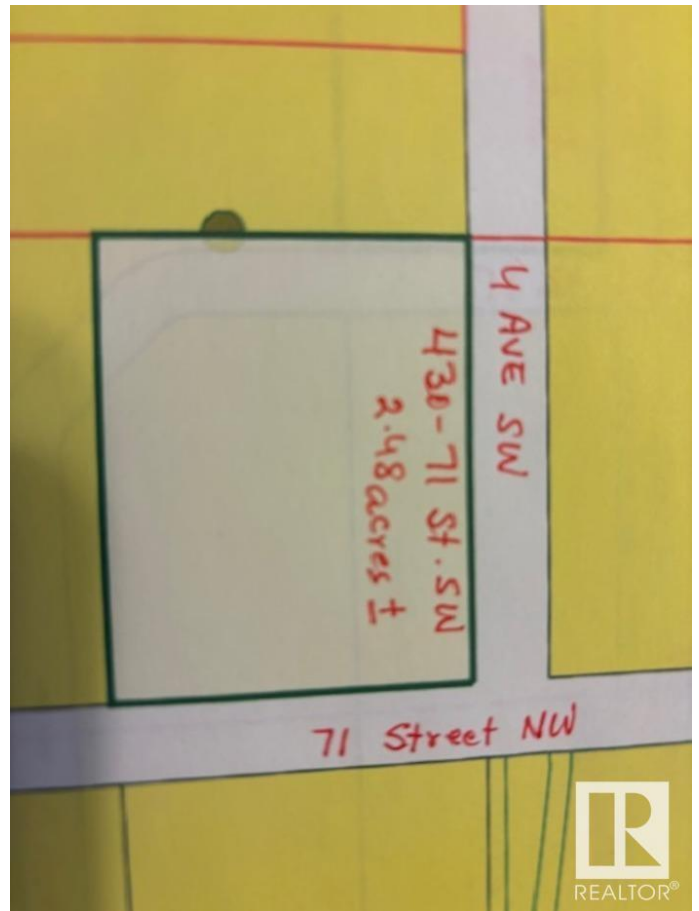
Ellerslie, Edmonton, AB

Amazing opportunity for a investor and or a developer to rezone this corner 2.48 acres, more or less, located in the General Area of Ellerslie & 66 street schools, for future developments. There are already properties of this immediate area that already has been re-zoned and are being developed and also some properties are being re-zoned to commercial, business, mix-use zonings, apartments and townhouse type developments. Property is 2.48 acres  $\hat{A}\pm$ , has older Bungalow about 1188 sqft, 3 Bedrooms on main floor, fully finished basement, double attached garage. Home is rented for \$1450 a month. On SW Corner of the property is a Roger's Tower Lease on the property that pays \$30,800 yearly.

Built in 1963

### Essential Information

MLS® #	E4411363
Price	\$2,900,000
Bedrooms	3
Bathrooms	1.50
Full Baths	1
Half Baths	1
Square Footage	1,188
Acres	2.48



Year Built 1963  
 Type Single Family  
 Sub-Type Detached Single Family  
 Style Bungalow  
 Status Active

**Community Information**

Address 430 71 Street  
 Area Edmonton  
 Subdivision Ellerslie  
 City Edmonton  
 County ALBERTA  
 Province AB  
 Postal Code T6X 1A3

**Amenities**

Amenities See Remarks  
 Parking Double Garage Attached

**Interior**

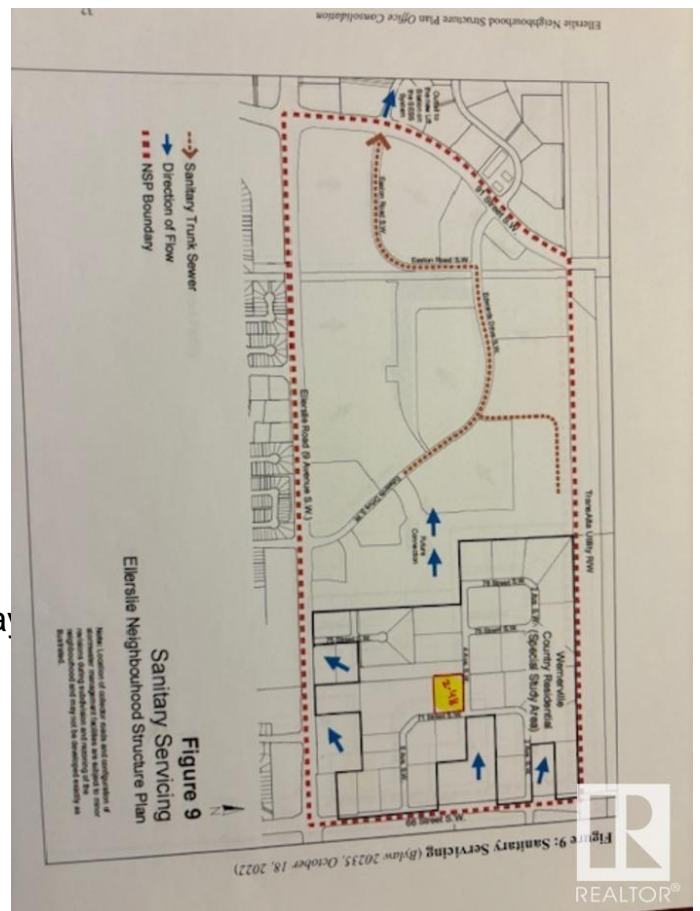
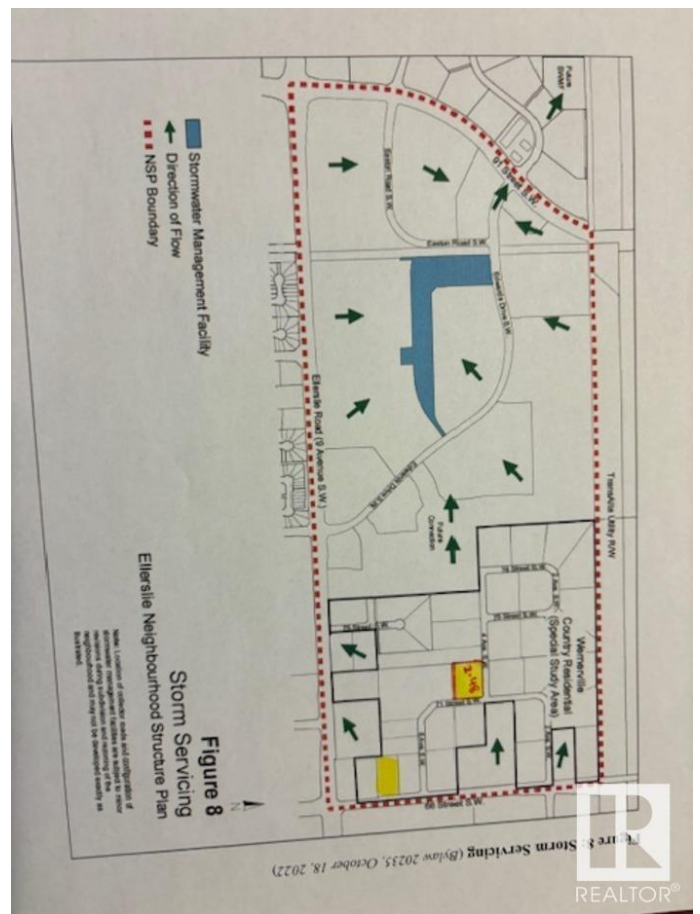
Appliances See Remarks  
 Heating Forced Air-1, Natural Gas  
 Fireplace Yes  
 Fireplaces Woodstove  
 Stories 2  
 Has Basement Yes  
 Basement Full, Finished

**Exterior**

Exterior Wood, Stucco, Vinyl  
 Exterior Features Corner Lot, Landscaped, Play  
 Lot Description 107,946.036 Sqft  
 Roof Asphalt Shingles  
 Construction Wood, Stucco, Vinyl  
 Foundation Concrete Perimeter

**Additional Information**

Date Listed October 22nd, 2024  
 Days on Market 165



DATA IS DEEMED RELIABLE BUT IS NOT GUARANTEED ACCURATE BY THE REALTORS® ASSOCIATION OF EDMONTON. COPYRIGHT 2025 BY THE REALTORS® ASSOCIATION OF EDMONTON. ALL RIGHTS RESERVED. Trademarks are owned or controlled by the Canadian Real Estate Association (CREA) and identify real estate professionals who are members of CREA (REALTOR®, REALTORS®) and/or the quality of services they provide (MLS®, Multiple Listing Service®)

Listing information last updated on April 5th, 2025 at 3:02pm MDT